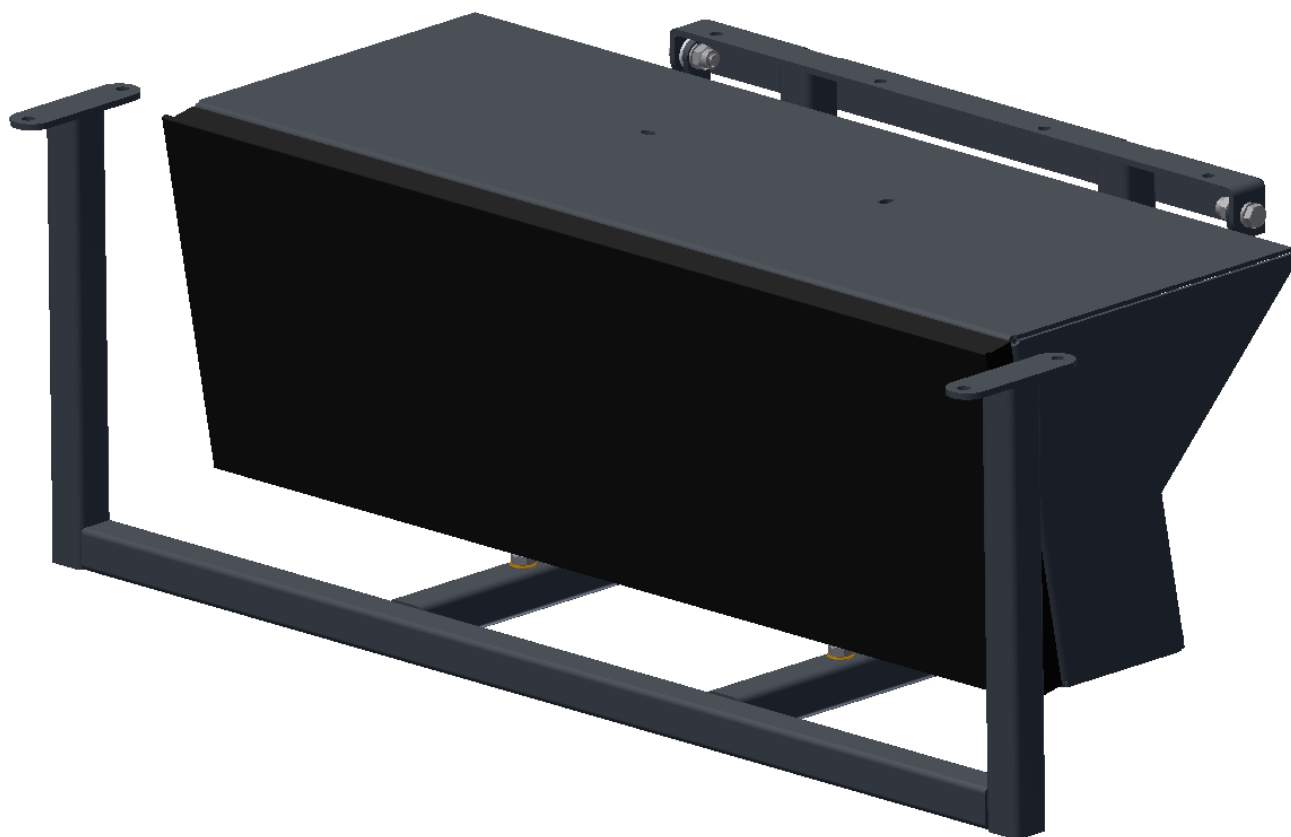


Installatie handleiding

P5846



1.

Maak een uitsparing in het tafelblad.

Gebruik de bijgevoegde gegevens voor het bepalen van de uitsparing.

Maak altijd eerst een proefsample alvorens in het originele blad te verwerken.

2.

Installeer het systeem onder het tafelblad (max. bladdikte 30 mm) met voldoende schroeven. Zorg voor een stevige montage en gebruik desnoods metalen inserts in het tafelblad voor de montage van het systeem.

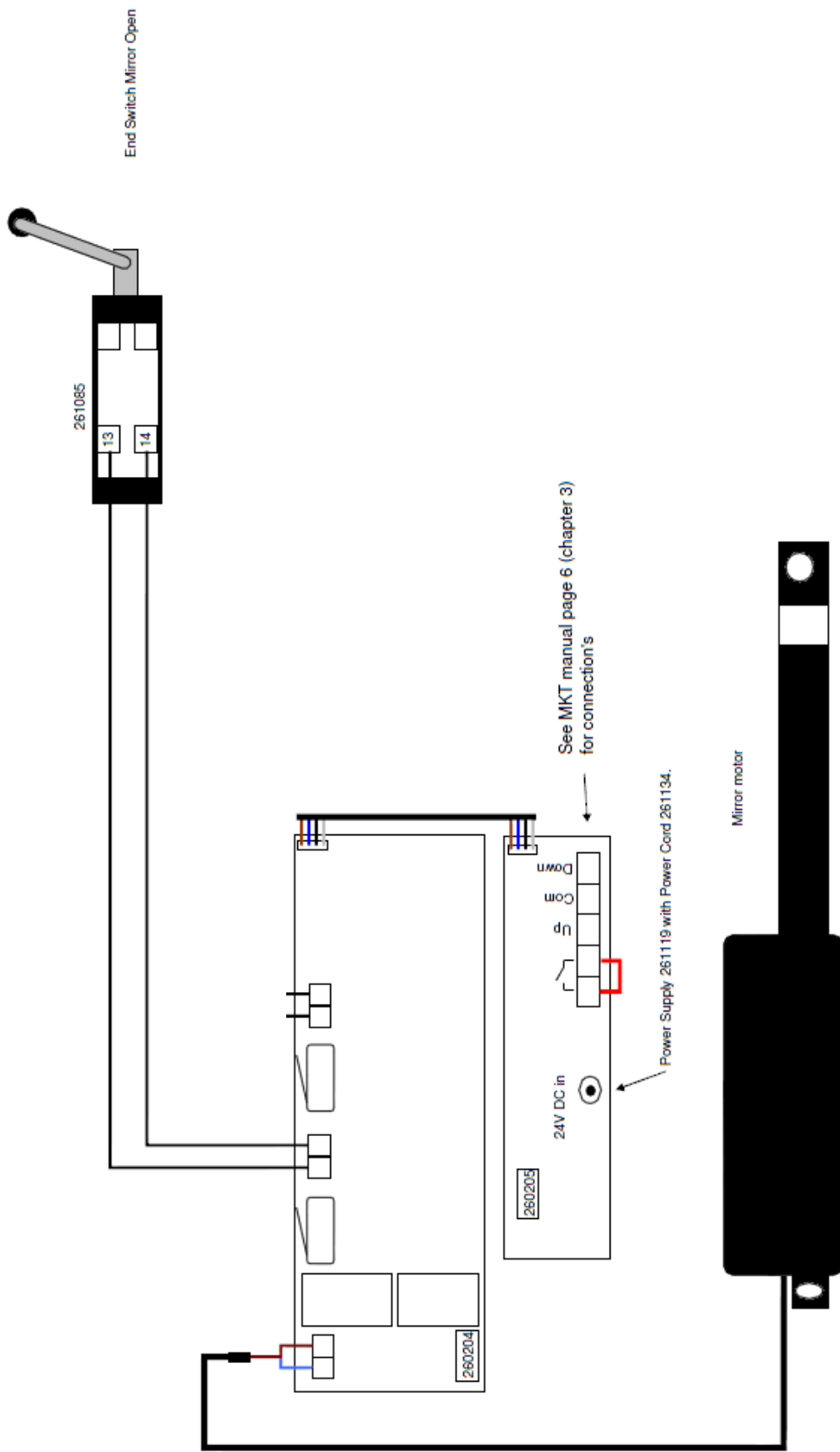


Het dekkende deel op het beeldscherm mag geen gevaar vormen voor de gebruiker.

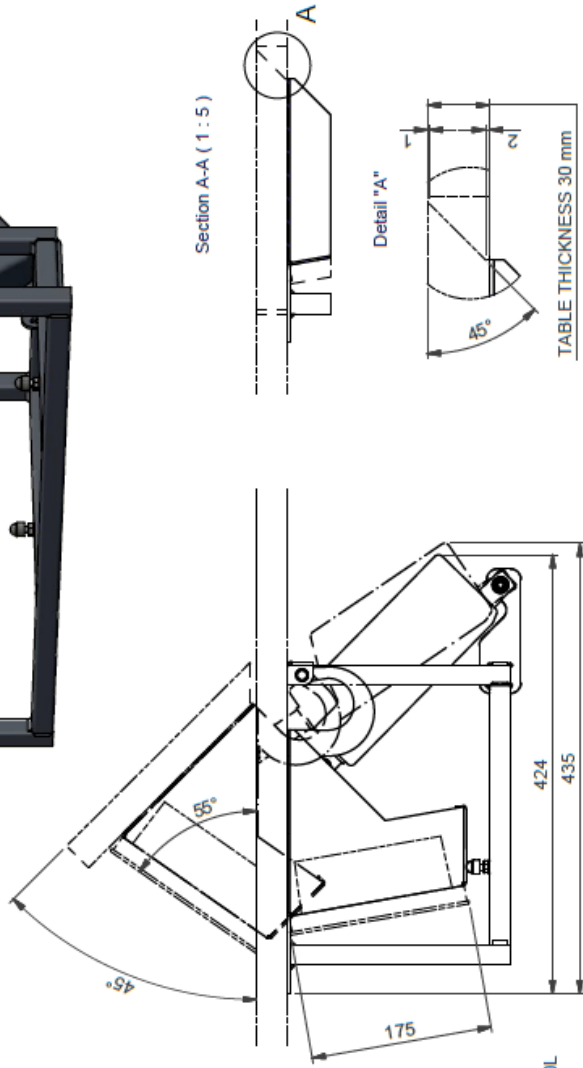
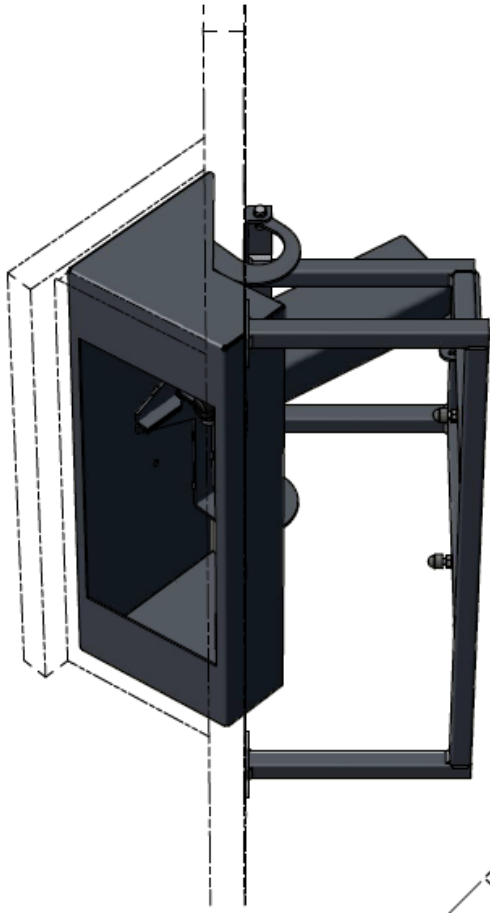
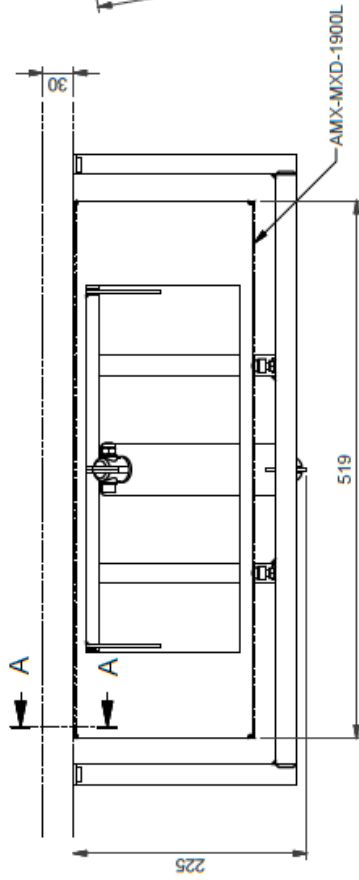
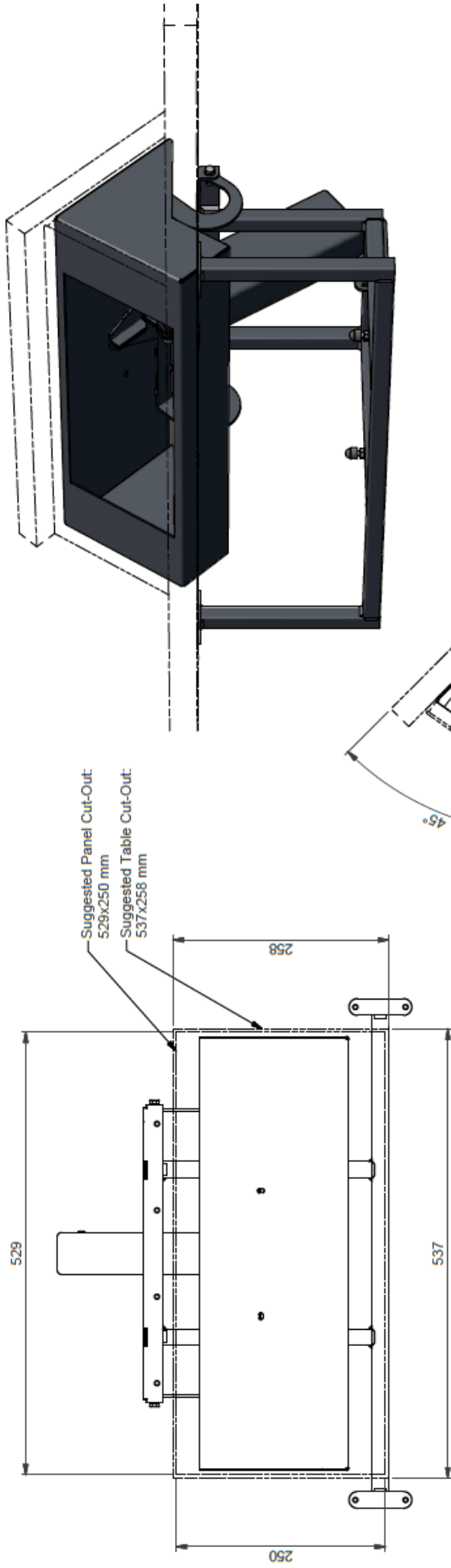
Indien het systeem sluit mag er geen afknelgevaar ontstaan. Maak het dekpaneel vast met snappers of klittenband (spec. 3M).

3. Aansluiten en bedienen

Zie het aansluitschema voor de juiste aansluitingen.



This diagram is suitable for the models:
 MKT-150/MKT-150-T/MKT-150W S/MKT-150WS-T
 MKT200/MKT-200-T/MKT-200W S/MKT-200WS-T
 MKT-250/MKT-250-T
 MKT-265



NOTE: All dimensions are ±..., in mm and subject to change

© COPYRIGHT AUDIPACK
This print and the information shown
thereon, is the property of
AUDIPACK.
It may not be delivered to others nor
reproduced for general circulation
without the written consent of the
AUDIPACK engineering department.

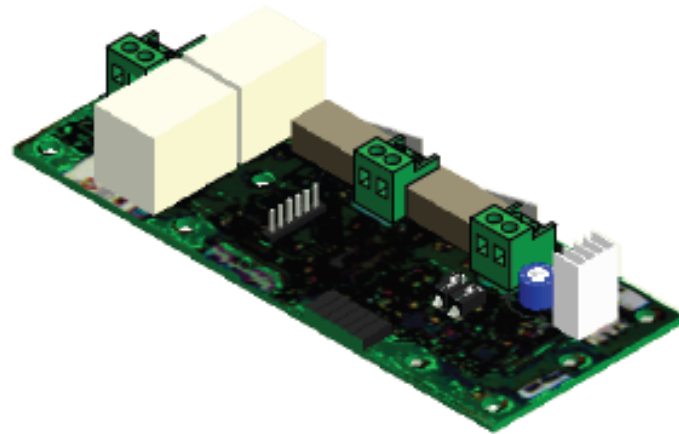


AUDIPACK
Industriestraat 2-4
2751 GT Moerkapelle
the Netherlands
Tel: +31(0)786831671
Fax: +31(0)786933115
www.audipack.com

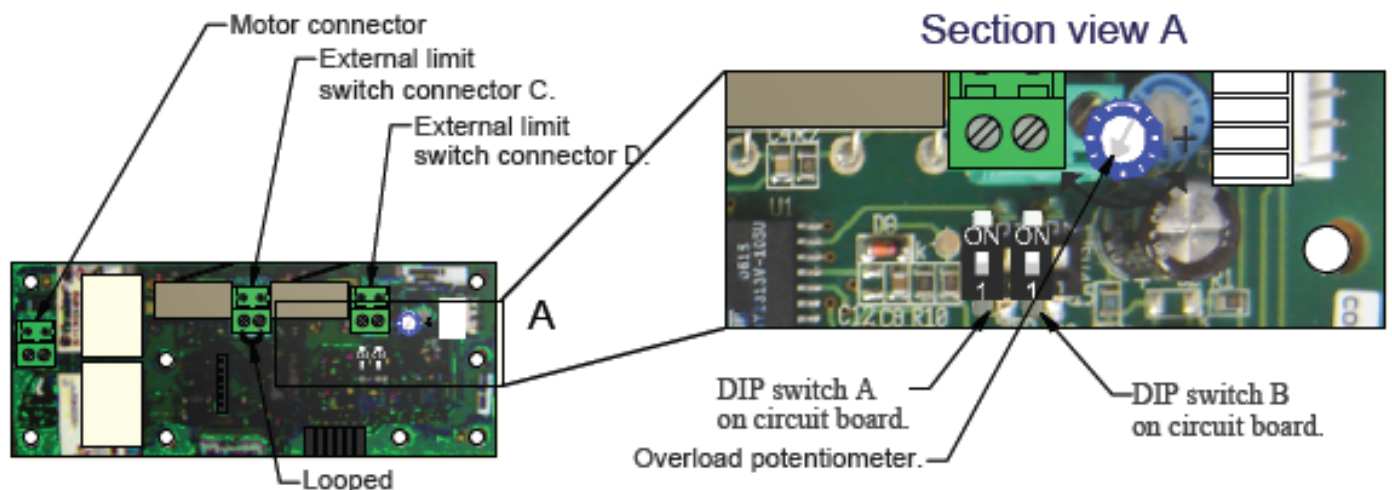
Situation
P5846

POP-UP LIFT for AMX MXD-1900L
touch panel

260204 MOTOR BOARD



Pulse or Constant, adjusting Overload Protection



DIP switch A.

Pulse control:

DIP switch A is set 'ON'.

The circuit board functions with a pulse command.

When a second pulse, the lift will stop.

When a third pulse will start the system in the other direction.

Constant control:

DIP switch A is set '1'.

When both DIP switches are set '1', the circuit board functions with a constant command; when release, the lift will stop.

DIP switch B.

If overload reverse:

DIP switch B is set 'ON'.

When an electrical overload is measured, (only when adjusted the potentiometer overload) the system will reverse direction, until its end stop/switch.

If overload stop:

DIP switch B is set '1'.

When an electrical overload is measured, (adjusted by the potentiometer overload) the system will stop.

Factory settings:

Mirror kit:

- Overload potentiometer is set as much as necessary to move the mirror.
- DIP switch A is set 'ON'.
- DIP switch B is set 'ON'.
- With IR/HF remote control:
- DIP switch A is set 'ON'.
- DIP switch B is set 'ON'.

ML/XL lift:

- Overload potentiometer is set maximum.
- DIP switch A is set '1'.
- DIP switch B is set '1'.
- With IR/HF remote control:
- DIP switch A is set 'ON'.
- DIP switch B is set 'ON'.
- External limit switch C is looped.

Pulley lift:

- Overload potentiometer is set maximum.
- DIP switch A is set '1'.
- DIP switch B is set '1'.

Audipack's general conditions of sales and delivery apply to all of Audipack's deliveries. These conditions can be downloaded from Audipack's website, www.audipack.com, or will be sent by post on request.

Audipack liefert ausschließlich unter die allgemeine Verkauf- und Lieferungsbedingungen von Audipack. Diese Bedingungen sind zum downloaden verfügbar auf die Webseite von Audipack, www.audipack.com, oder werden Ihnen auf Anfrage per Post gesendet.

Alle leveringen geschieden uitsluitend volgens de Algemene Verkoop- en Leveringsvoorwaarden van Audipack. Een afschrift hiervan kunt u downloaden van de website van Audipack, www.audipack.com, of wordt u op aanvraag gestuurd per post.

Les conditions de vente et de livraison de Audipack s'appliquent à tous les livraisons de Audipack. Cette conditions sont disponible sur le site internet de Audipack, www.audipack.com, où seront envoyé par poste sur demande.

AUDIPACK

Industriestraat 2-4
2751 GT Moerkapelle
the Netherlands

Tel: +31(0)795931671
Fax: +31(0)795933115
Email: audipack@audipack.com

www.audipack.com

Audipack reserves the right to make changes in specifications and other information contained in this document without prior written notice. The information provided herein is subject to change without notice. In no event shall Audipack be liable for any incidental, special, indirect, or consequential damages whatsoever, including but not limited to lost profits, arising out of or related to this manual or the information contained herein, even if Audipack has been advised of, known, or should have known, the possibility of such damages.