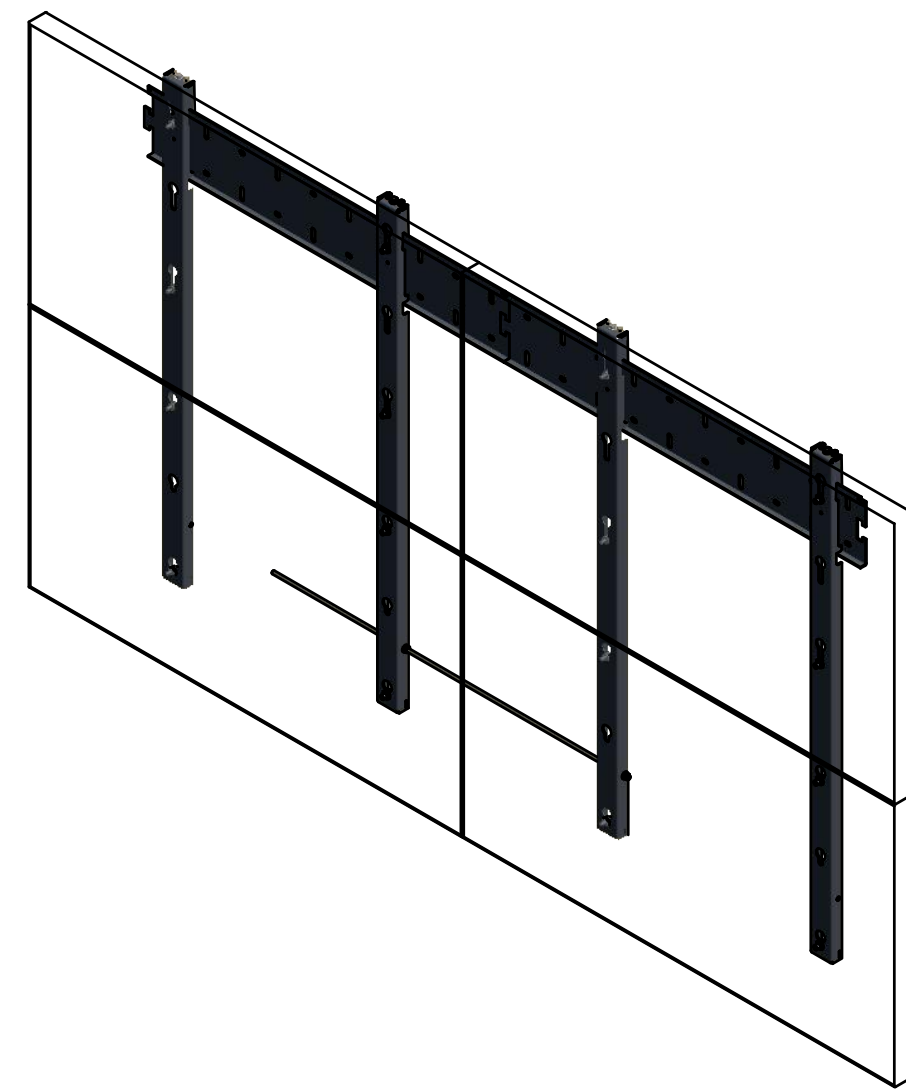
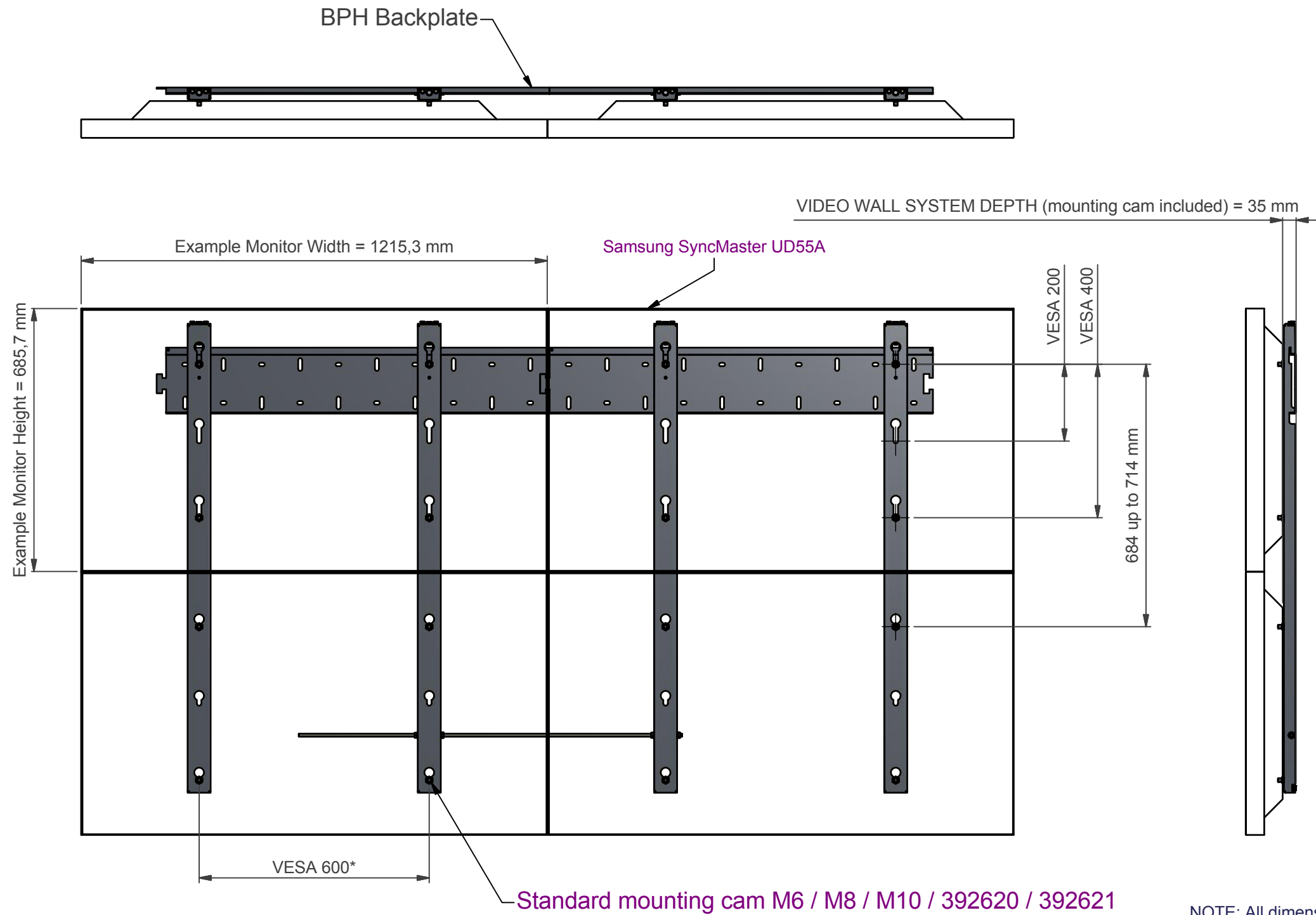



VIDEO WALL VESA 200 and 400 DOUBLE MOUNTING ARM FOR CENTRIC VESA PATTERN OUTLINE



NOTE: All dimensions are ±..., in mm and subject to change

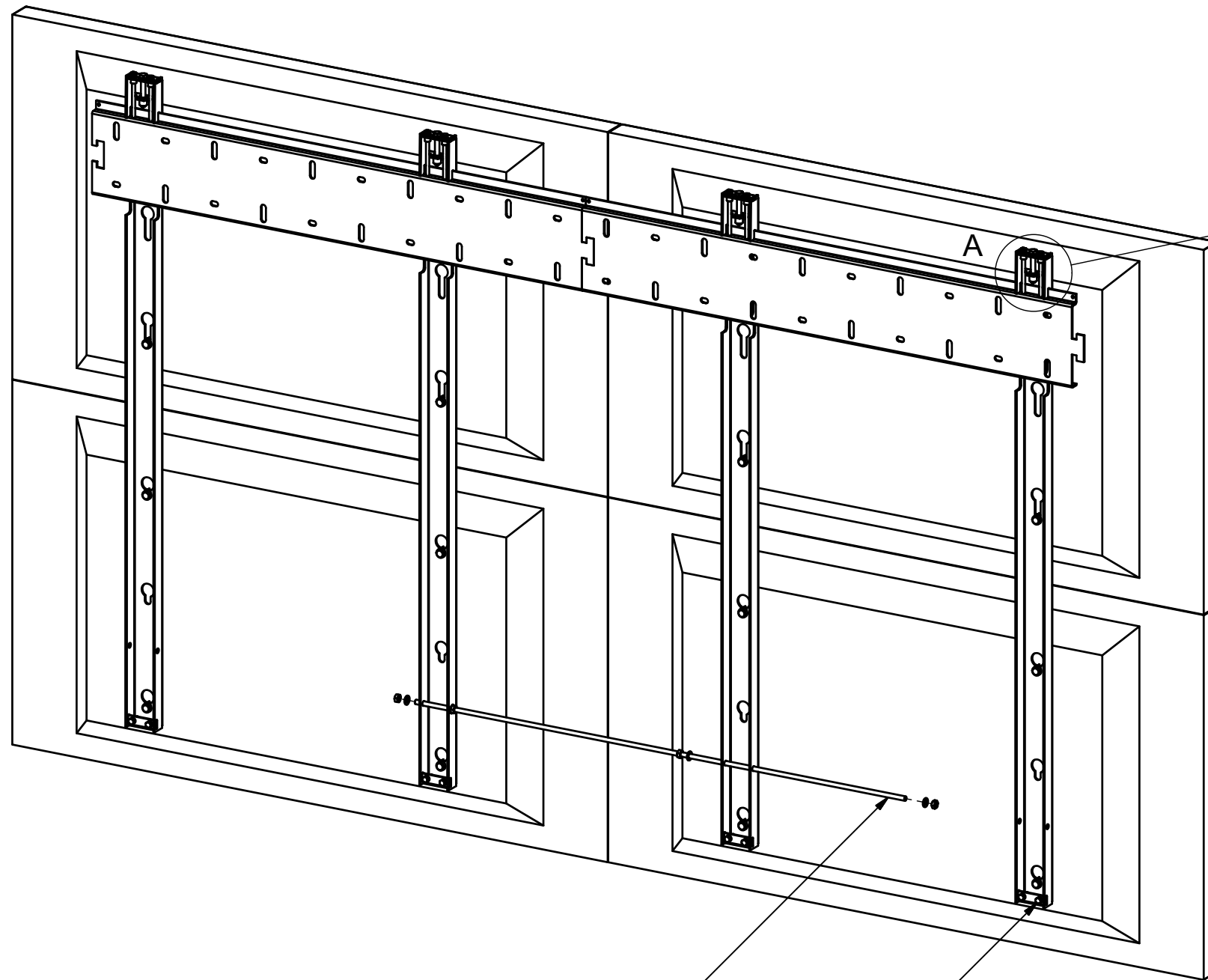
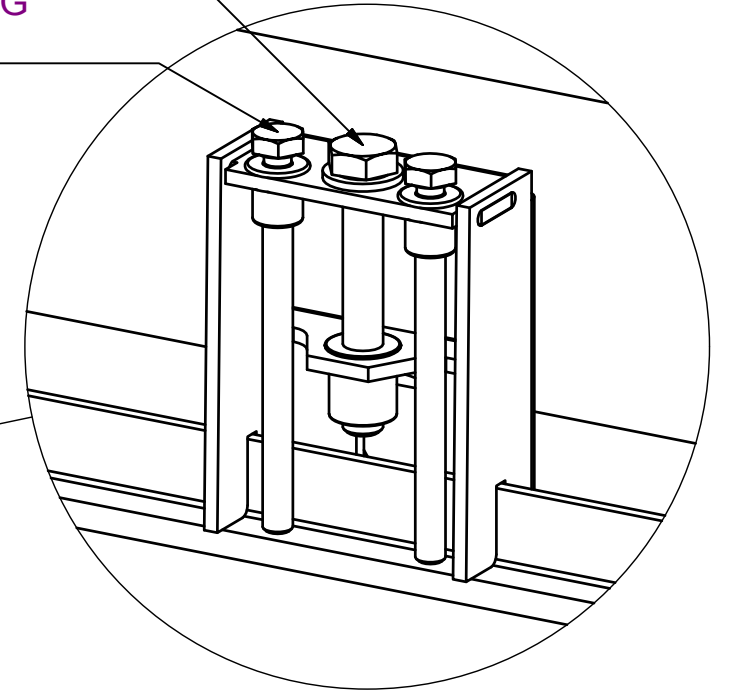
*) It is variable depends on the width of the monitor.

Dimensions are indications, not to be used for any preparations. No rights can be derived from the above dimensions.

<p>© COPYRIGHT AUDIPACK This print and the information shown thereon, is the property of AUDIPACK. It may not be delivered to others nor reproduced for general circulation without the written consent of the AUDIPACK engineering department.</p>	 <p>AUDIPACK Industriestraat 2-4 2751 GT Moerkapelle the Netherlands Tel: +31(0)795931671 Fax: +31(0)795933115 www.audipack.com</p>
<p>PRESENTATION VWM-MA-2-55</p>	<p>VIDEO WALL MOUNTING ARM DOUBLE 55 inch VESA 200/400</p>

MONITOR HEIGHT ADJUSTMENT
MONITOR HOOGTEVERSTELLING

HORIZONTAL ARM ALIGNMENT
HORIZONTALE ARM UITLIJNING



CUT TO LENGTH IF CONVENIENT
EVENTUEEL OP LENGTE INKORTEN

WALL OFFSET ADJUSTMENT
WANDVERSTELLING

NOTE: All dimensions are \pm ..., in mm and subject to change

© COPYRIGHT AUDIPACK
This print and the information shown
thereon, is the property of
AUDIPACK.
It may not be delivered to others nor
reproduced for general circulation
without the written consent of the
AUDIPACK engineering department.



AUDIPACK
Industriestraat 2-4
2751 GT Moerkapelle
the Netherlands
Tel: +31(0)795931671
Fax: +31(0)795933115
www.audipack.com

PRESENTATION
VWM-MA-2-55

VIDEO WALL MOUNTING ARM
DOUBLE 55 inch VESA 200/400

Dimensions are indications, not to be used for any preparations. No rights can be derived from the above dimensions.