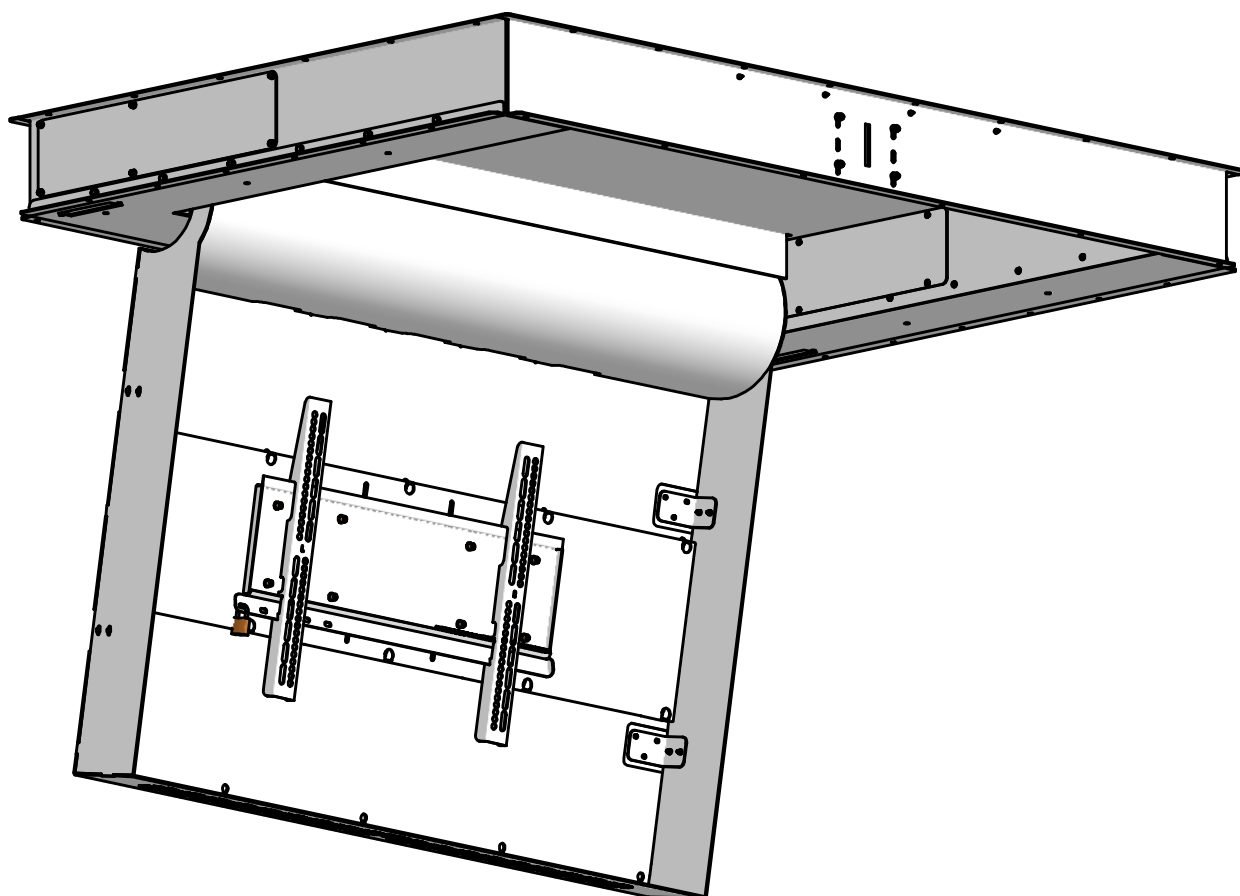




AUDIPACK
Industriestraat 2-4
2751 GT Moerkapelle
the Netherlands
Tel: +31(0)795931671
Fax: +31(0)795933115
Email: audipack@audipack.com
www.audipack.com



Flat panel flip down ceiling lifts

Mounting instructions
Montagevoorschrift
Instructions de montage
Montageanleitung

Important Safety Information



It is most important that this instruction book should be retained with the appliance for future reference. Should the appliance be sold or transferred to another owner, or should you move house and leave the appliance, always ensure that the book is supplied with the appliance in order that the new owner can get to know the functioning of the appliance and the relevant warnings. These warnings have been provided in the interest of safety. You **MUST read them carefully before installing or using the appliance.**

Installation

- This appliance is heavy. Care should be taken when moving it.
- It is dangerous to alter the specifications or attempt to modify this product in any way.
- All packing and transit bolts must be removed before use. Serious damage can occur to the product and to property if this is not adhered to. See relevant section in instructions.
- Any preparatory work required to install this appliance should be carried out by a qualified technician or competent person.
- Any electrical work required to install this appliance should be carried out by a qualified electrician or competent person.
- Care must be taken to ensure that the appliance does not stand on the electrical supply cable.
- If the machine is situated in a closed area, please arrange air channel in order to allow air to circulate freely.

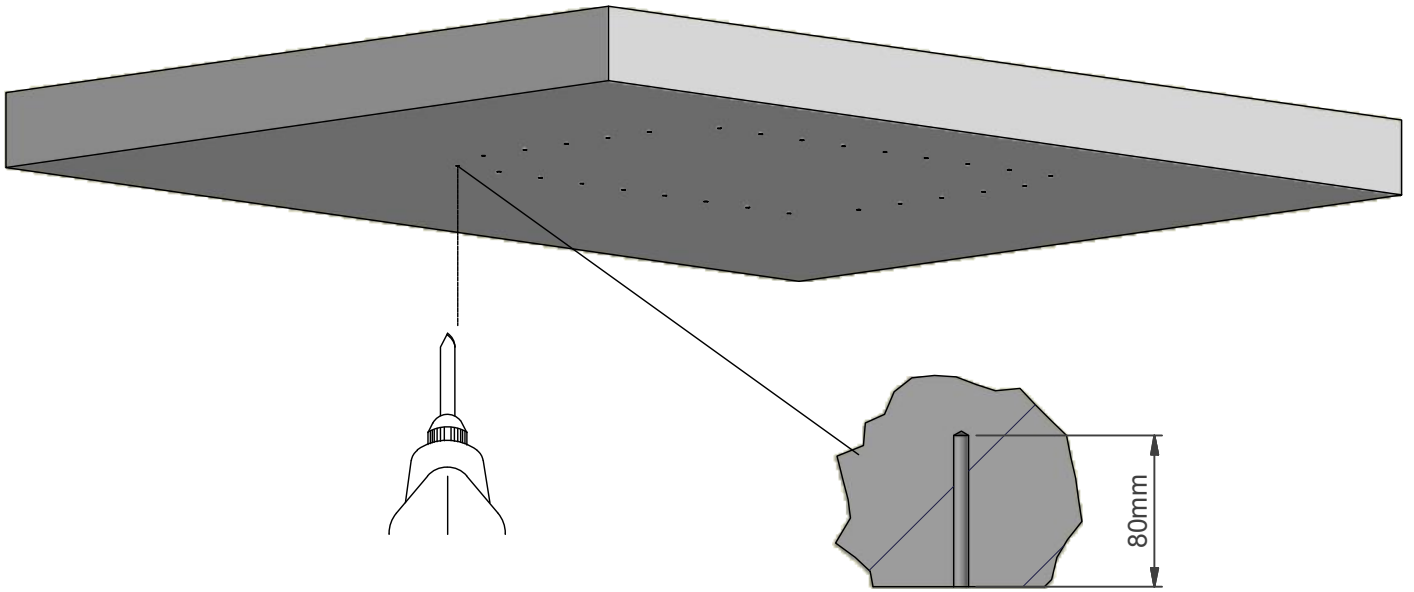
Child Safety



- This appliance is designed to be operated by adults. Children should not be allowed to tamper with the controls or play with the product.
- Pets and children have been known to climb into things. Please check your product before use.
- Keep children away from the vicinity of the appliance whilst it is in operation.
- Keep all packaging well away from children.
- Keep all detergents in a safe place out of children's reach.

Use

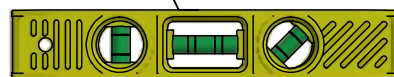
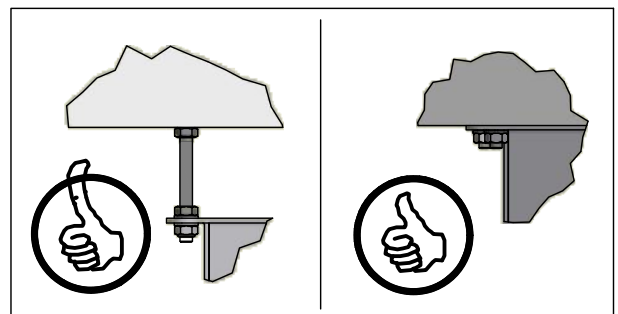
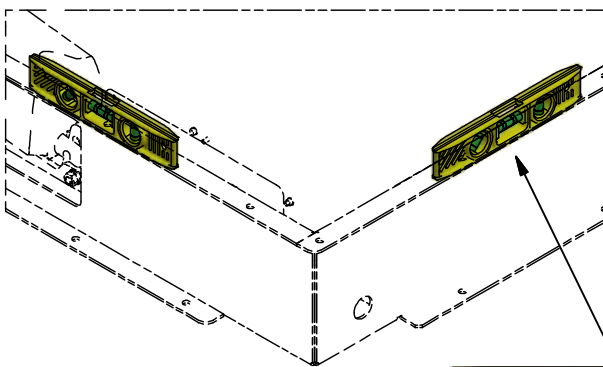
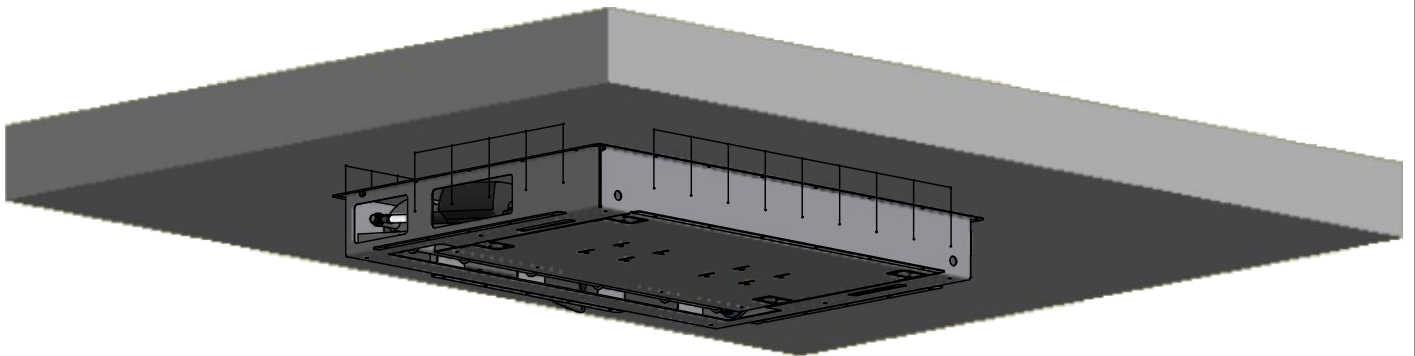
- Do not operate the appliance longer than 2 minutes upon a time. The duty cycle of the appliance is 10%. The duty cycle is the proportion of time during which a system is operated. A duty cycle of 10% means a operating maximal time of 2 minutes and a minimal time of 18 minutes to prevent overheating.
- Do not overload the appliance. See relevant section in the instruction book or specifications noted on the sticker of the appliance.
- Only install a monitor which is designed to be flipped on the back. If in doubt, consult the instruction book of the monitor or ask your dealer.
- Before operating, ensure that all objects under the appliance are removed. Avoid ladders, high chairs or high objects such as put away castes and doors under the moving circle of the appliance.
- Any objects such as coins, safety pins, nails, screws, stones or any other hard, sharp material can cause extensive damage and must not be placed into the monitor hatch.
- Do not use any volatile cleaning fluids that can cause paint damage on the appliance.
- The users should always check that they have not left the monitor on when closing the appliance. The monitor will get overheated.
- Under no circumstances should you attempt to repair the machine yourself. Repairs carried out by inexperienced persons may cause injury or serious malfunctioning. Contact your local Service Centre.
- Always insist on genuine spare parts.

1.



≥8x	CONCRETE BETON BÉTON BETON	WOOD HOLZ BOIS HOUT
	 DIN 16168 - M8x75	 DIN 571 - M8x80

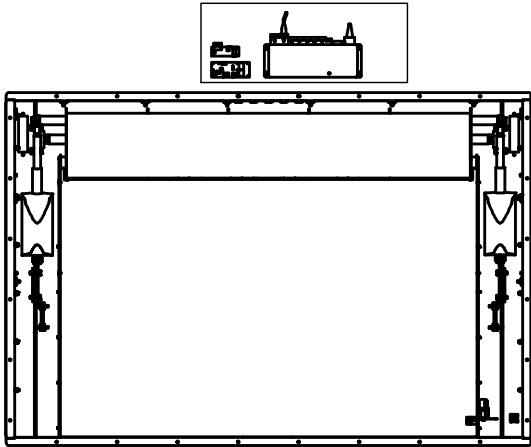
2.



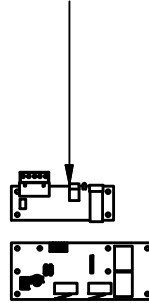
Make sure that the upper surface is flat

Standard:

View A

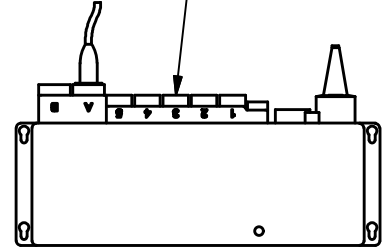


Please see attachment
"260205 CONTROL BOARD".



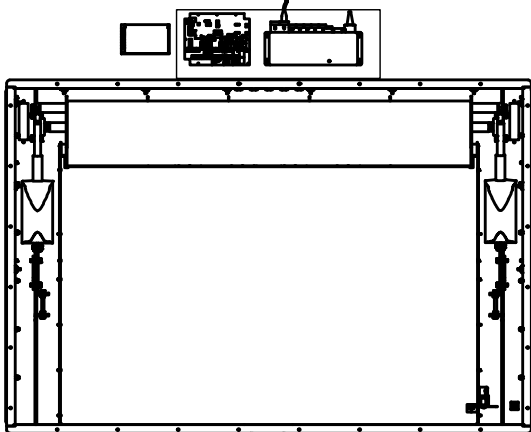
Please see attachment
"MOTOR CONTROL
BOX (parallel) 460106".

View A

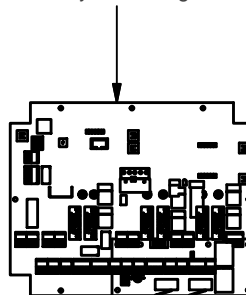


With optional Clamping Device:

View B

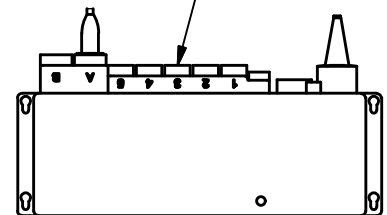


Please see attachment
"261138 3-way low voltage control".



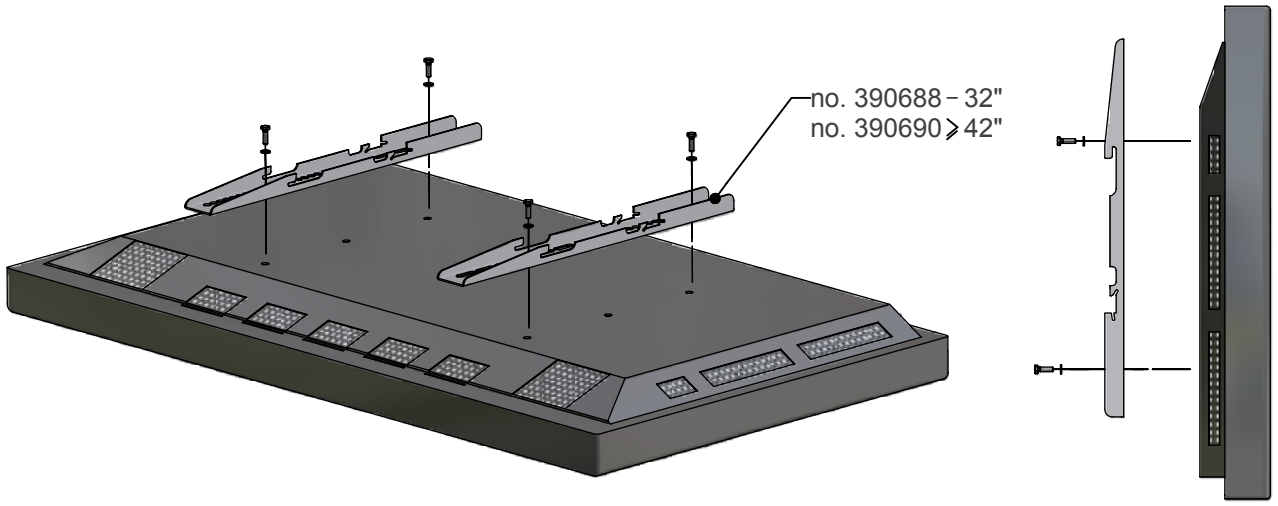
Please see attachment
"MOTOR CONTROL
BOX (parallel) 460106".

View B

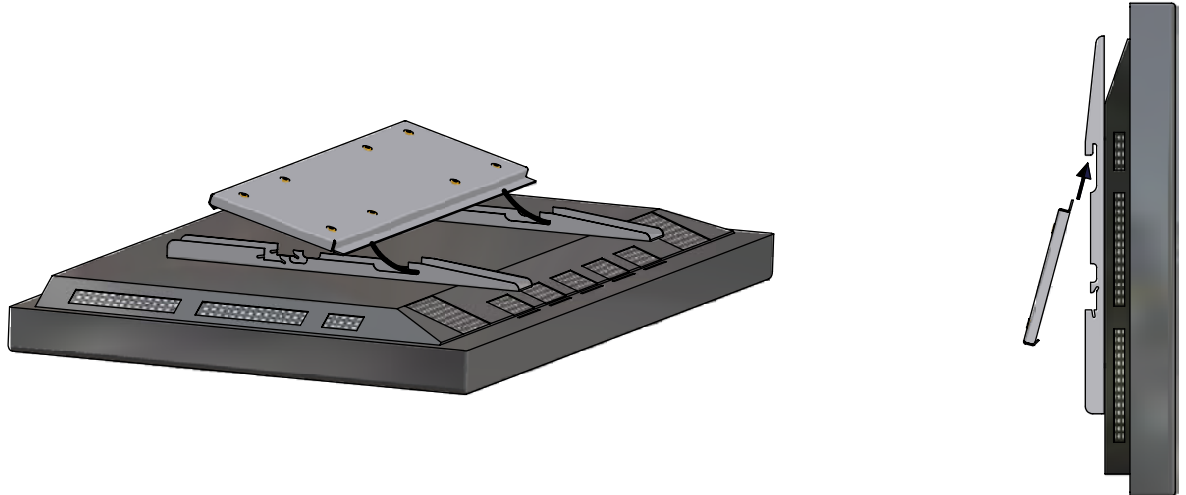


P3247
(optional)
Clamping Device

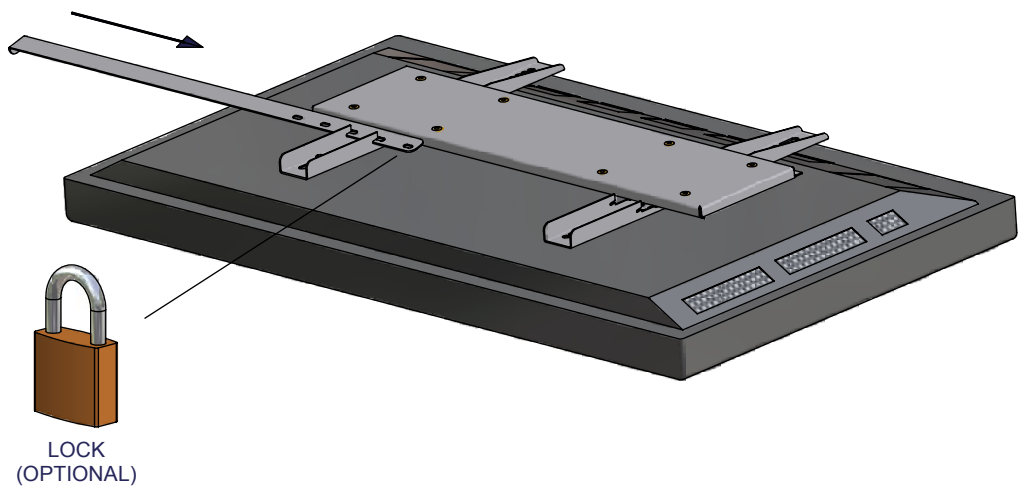
5.



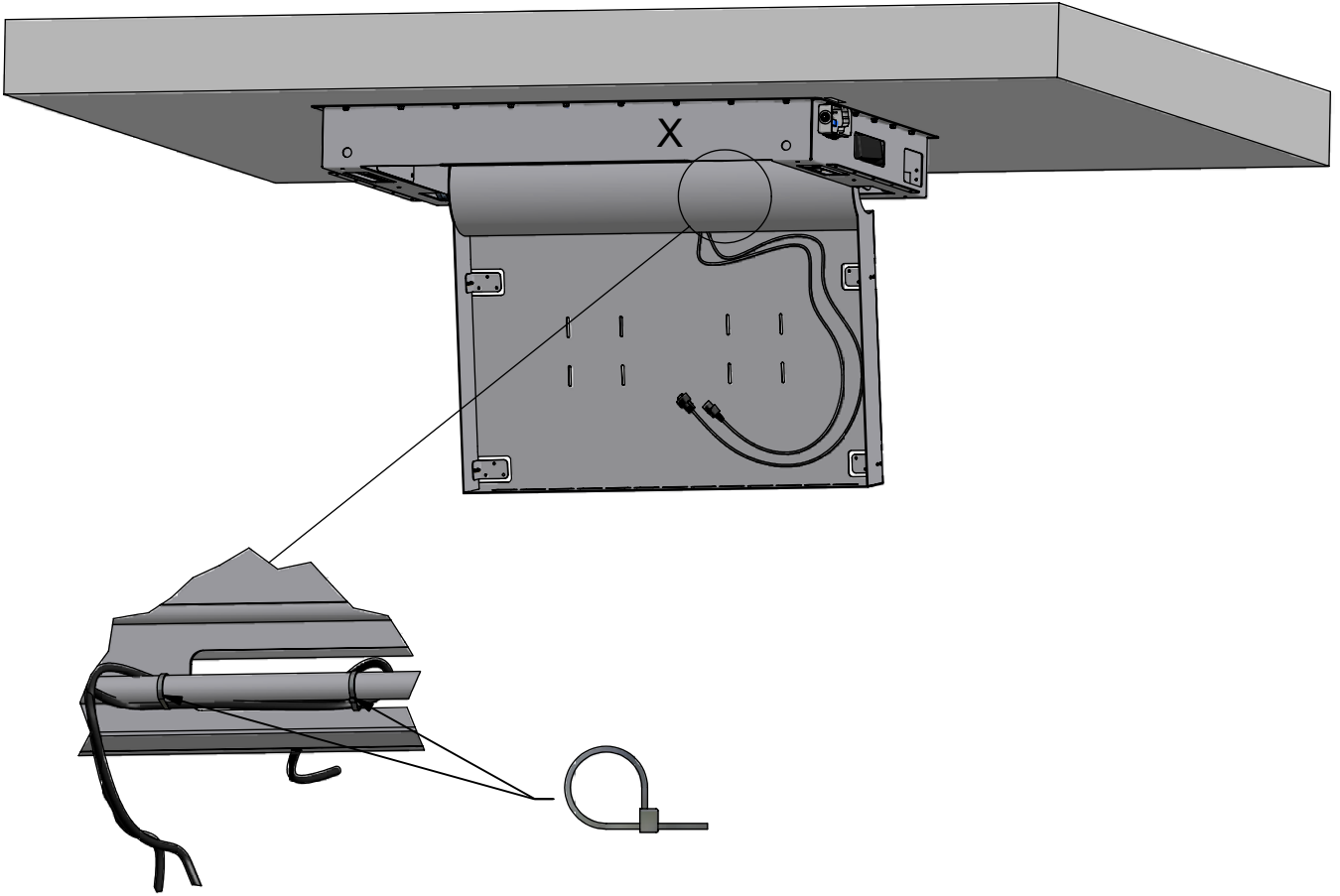
6.



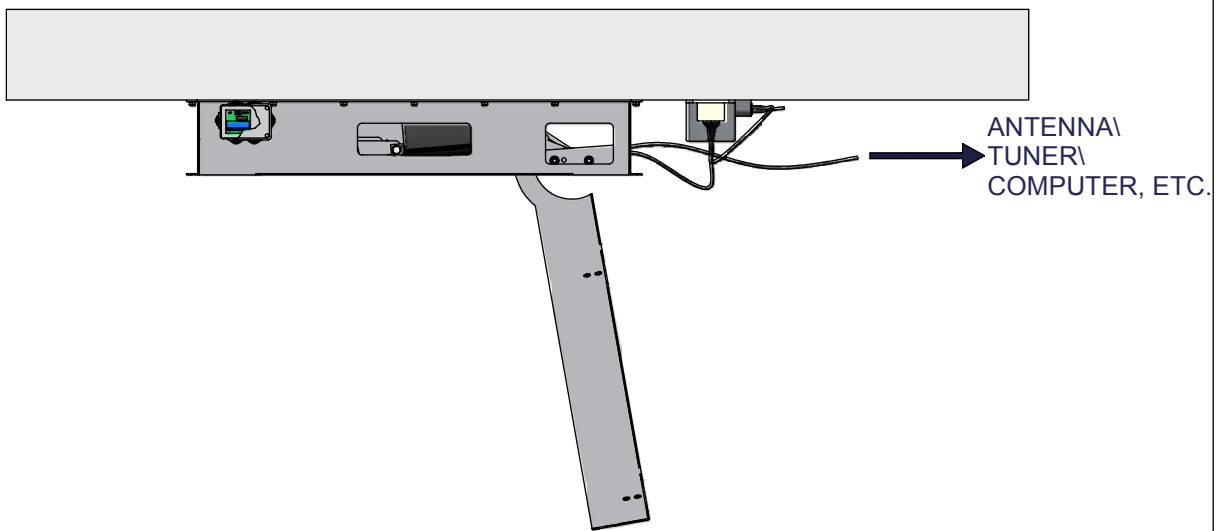
7.



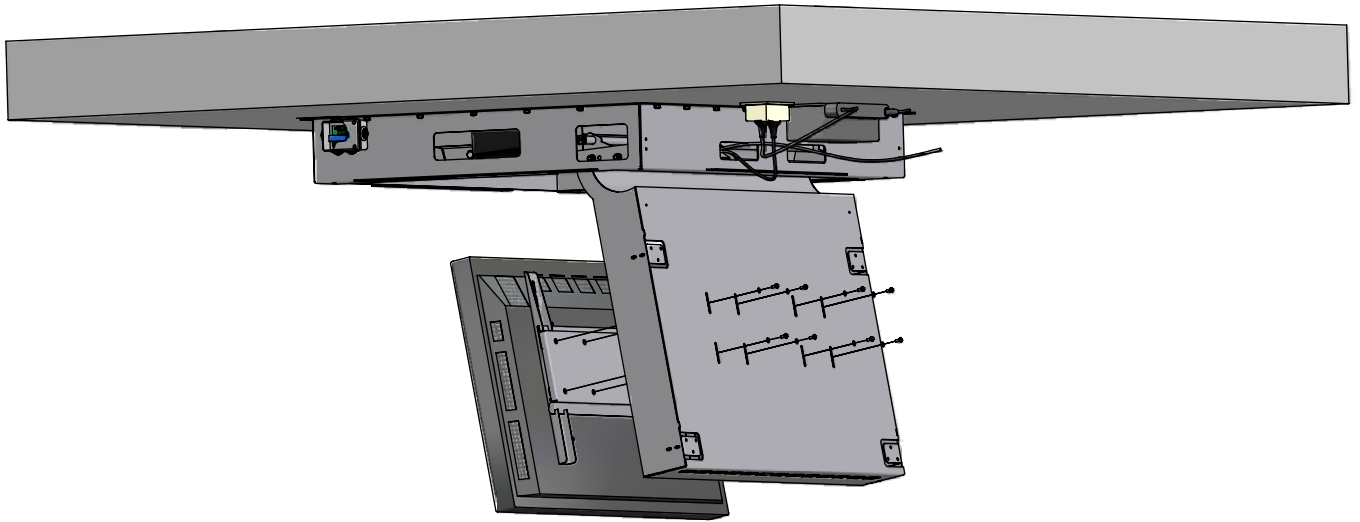
8.



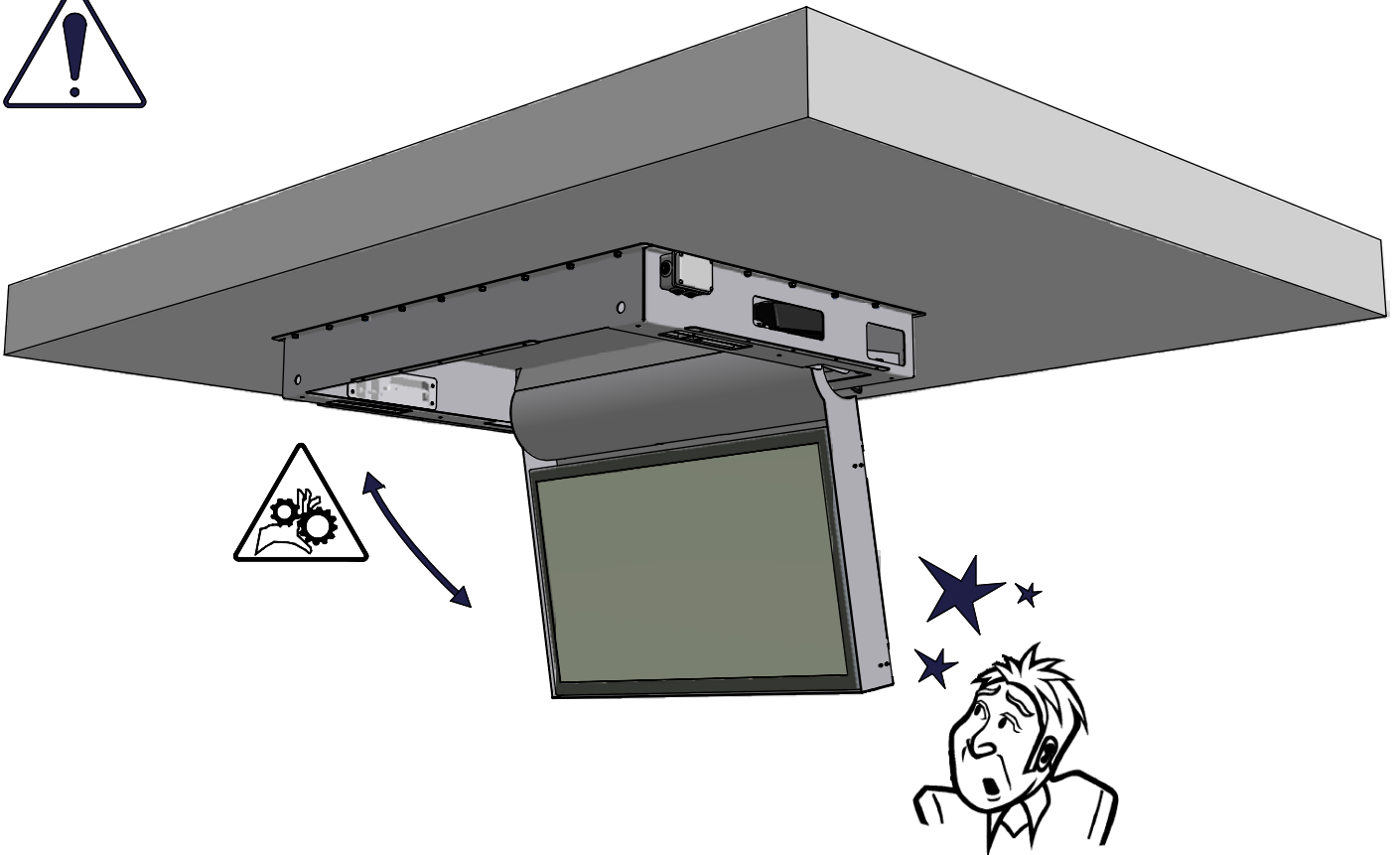
9.



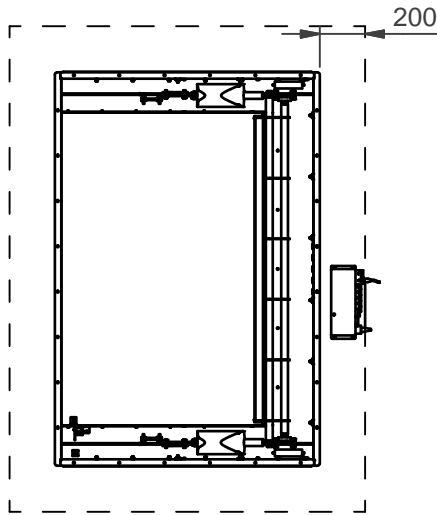
10.



11.



12.

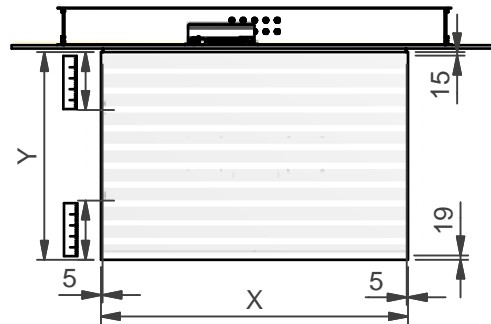
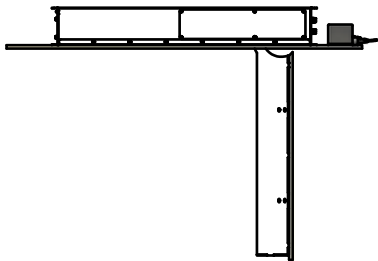


Take into account a clearance of 200 mm for service and maintenance.

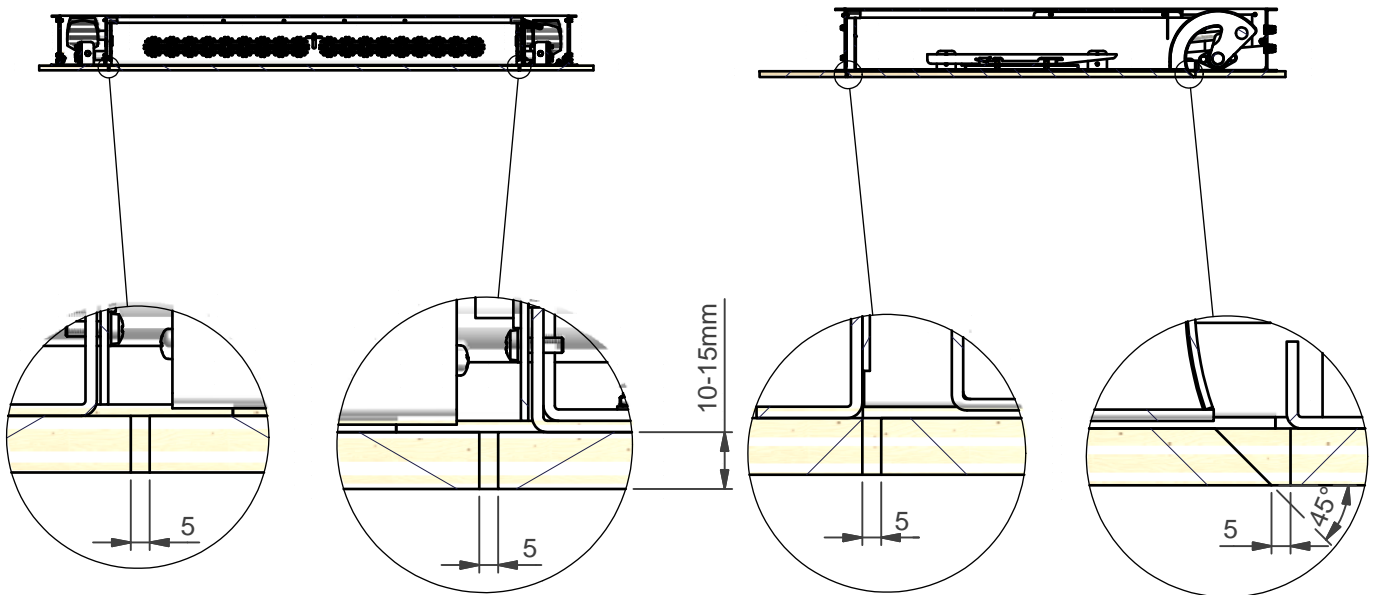
Ceiling panels around and underneath the lift must be removable for optimal access.

Be aware: max lifting weight is monitor + bracket + finishing plate.
(please read the product specifications for max lifting weight)

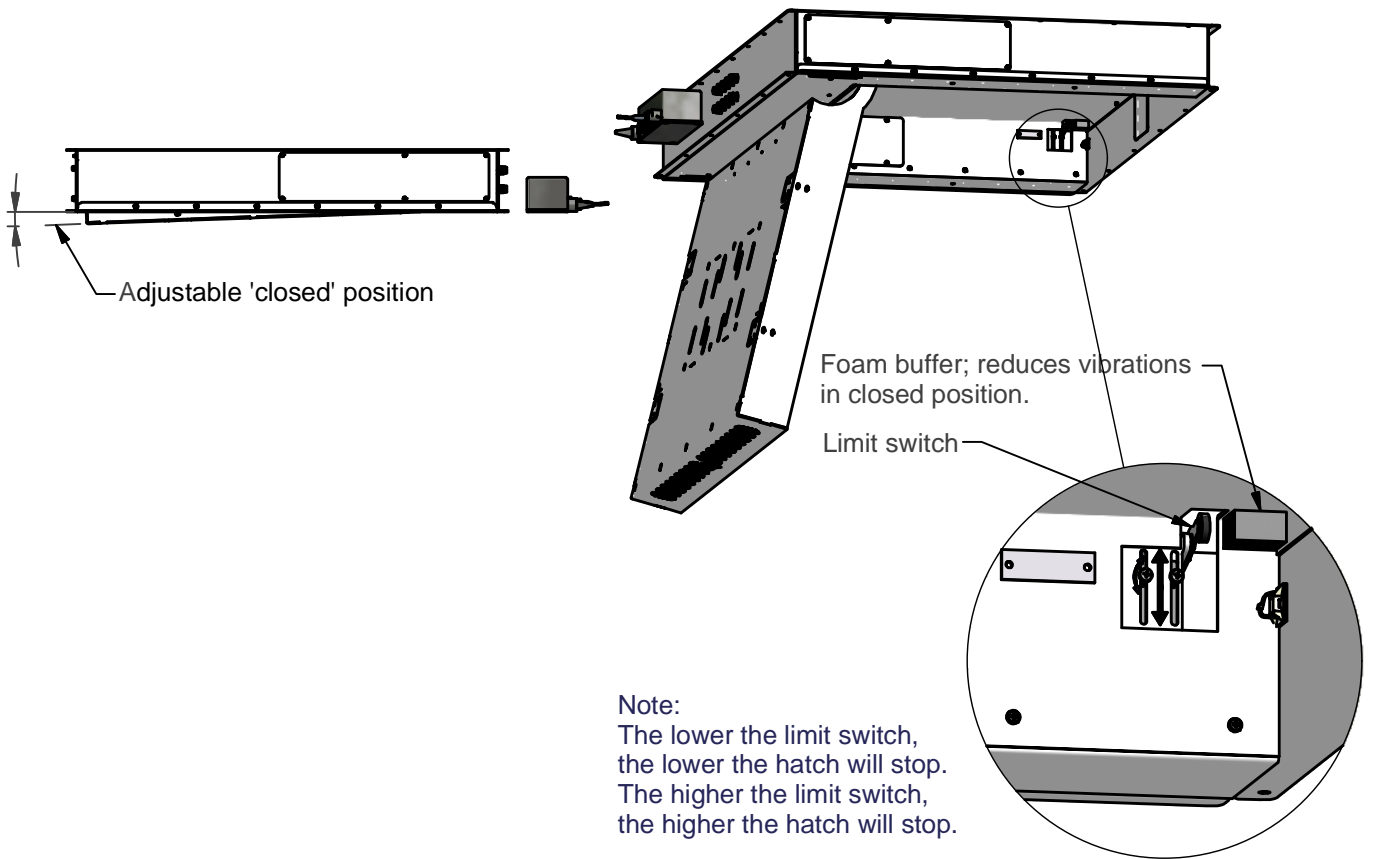
For example:
-If max lifting weight is 80 kg,
-monitor weights 50 kg,
-monitor bracket weights 15 kg,
-the finishing plate can weight no more than (80-50-15 =) 15 kg!



13.



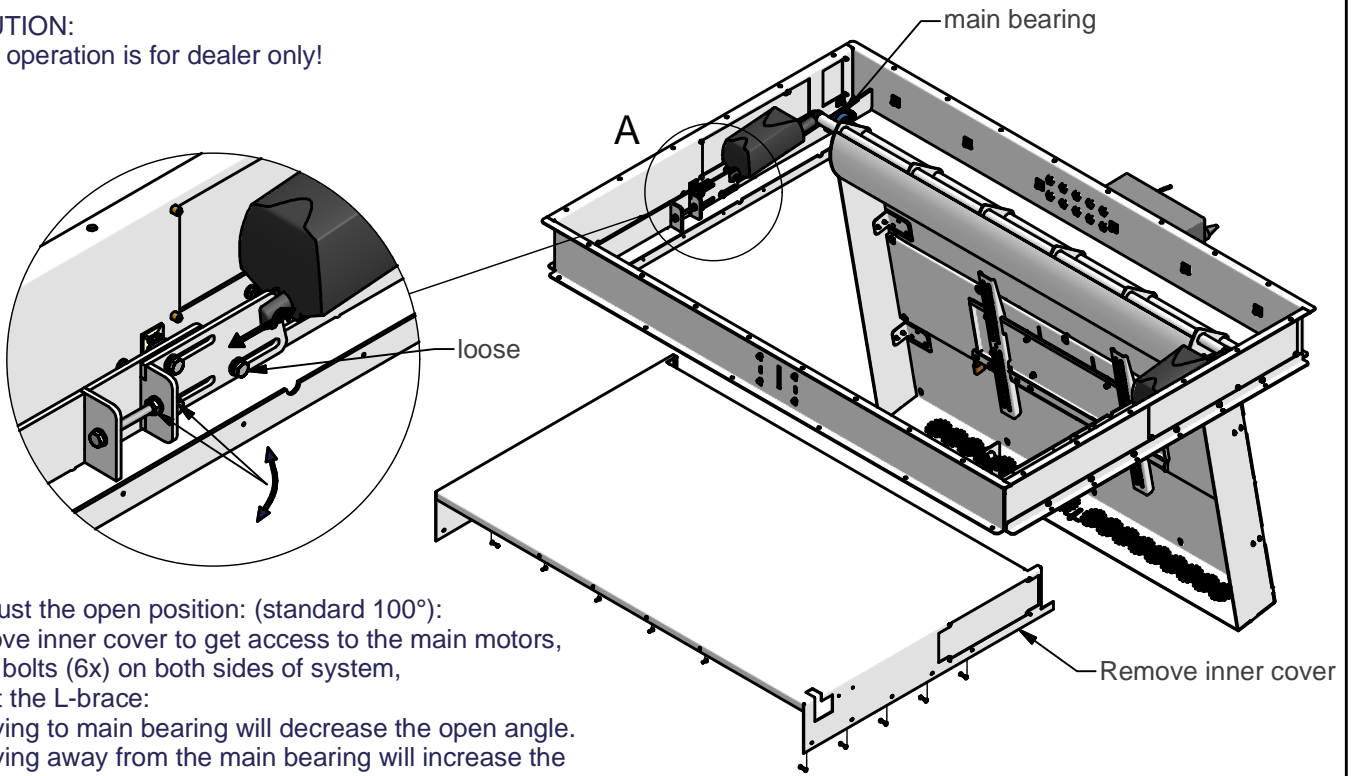
1



Note:
 The lower the limit switch,
 the lower the hatch will stop.
 The higher the limit switch,
 the higher the hatch will stop.

1

CAUTION:
 This operation is for dealer only!



To adjust the open position: (standard 100°):
 -Remove inner cover to get access to the main motors,
 -loose bolts (6x) on both sides of system,
 -adjust the L-brace:
 -> moving to main bearing will decrease the open angle.
 -> moving away from the main bearing will increase the open angle (with a max of 100°).

BE CAREFUL:
 Be sure that the two motors get adjusted with the same distance!
 The motors will get damaged in unequal adjustment!

1. EXTERNAL CONTROL: control by relay.

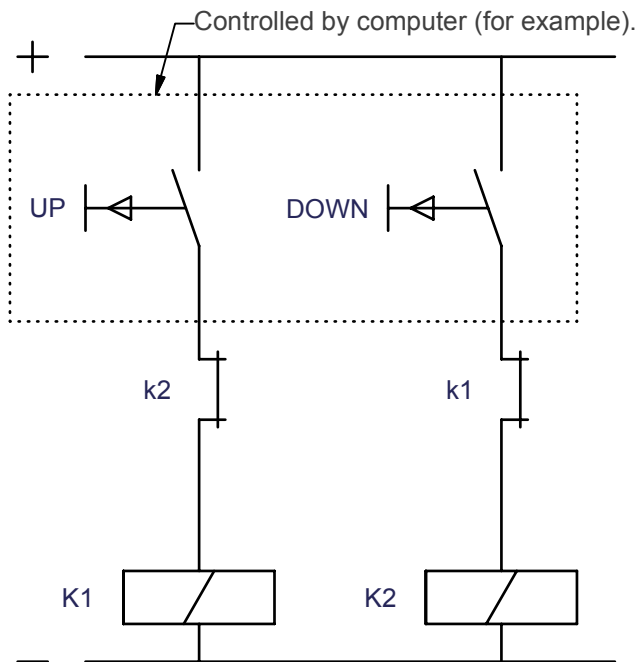


WARNING:

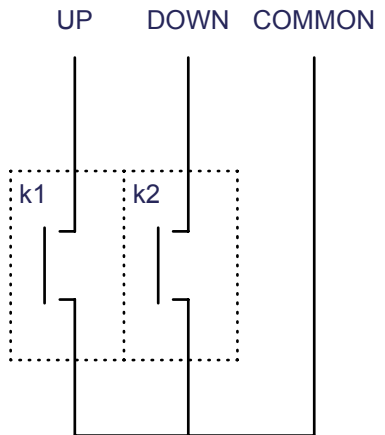
The tension on these wires can be 12-24 VDC and **230 VAC!**

WARNING:

The Motors have a duty cycle Max. 2min. on / **10min. Off**



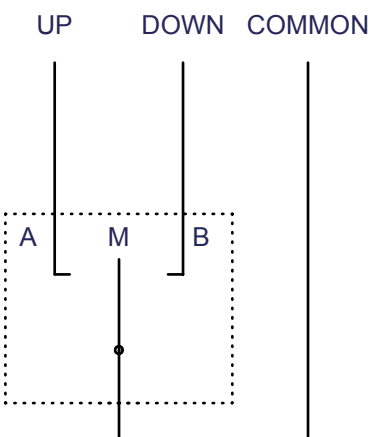
External cable control box (not the motor control box!)



-K1 and K2 are relays.
-k1 and k2 are relays.

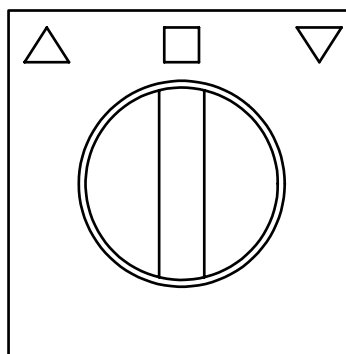
2. EXTERNAL CONTROL: control by switch or remote.

External cable control box (not the motor control box!)

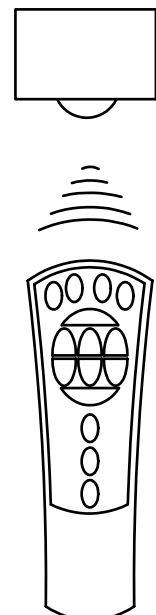


-A and B are potential free contacts.
-A: up or down.
-B: down or up.
-M: middle position (!).

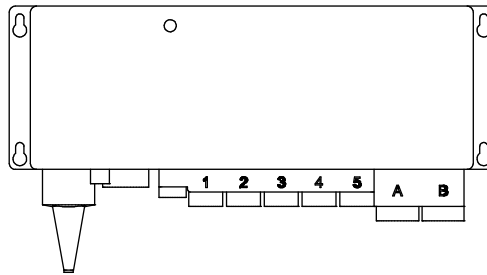
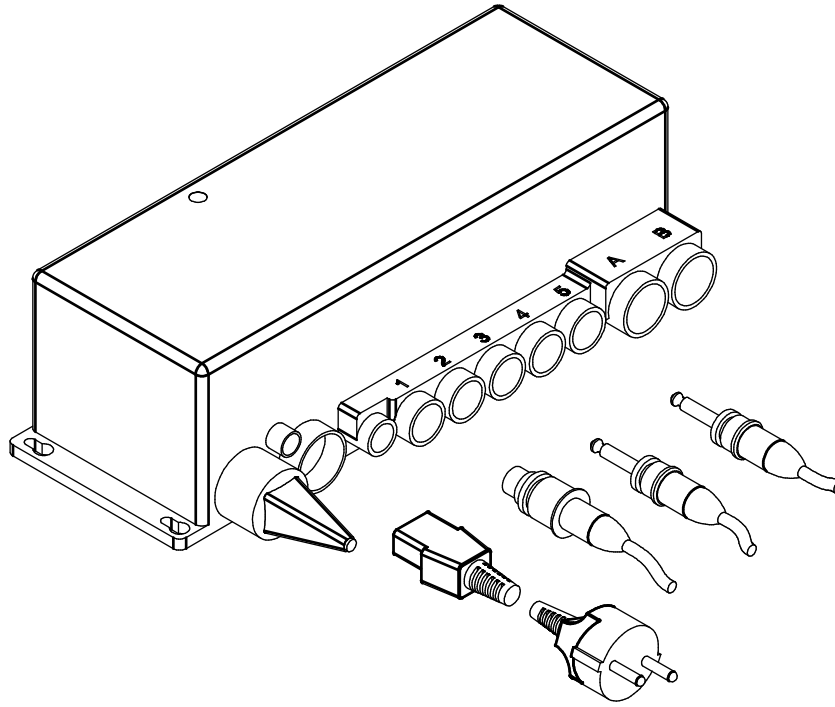
Wall switch (with neutral position) (not supplied)



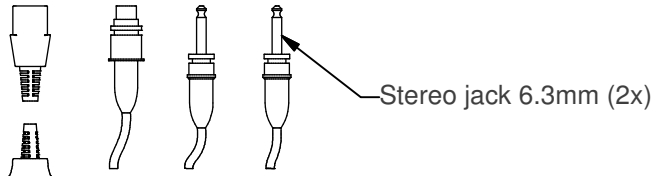
(Optional) remote control



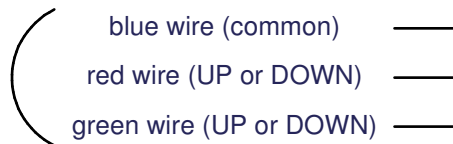
MOTOR CONTROL BOX (parallel) 460106



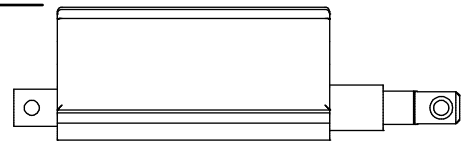
U in: 230 VAC 50 Hz
 I in: max. 3 A
 U out: 24VDC max 120 VA
 Duty cycle: 10 %, max 2 min./18 min.



Channel 1

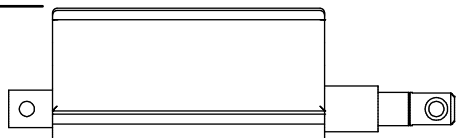


24 VDC motor 1



both parallel in-out

24 VDC motor 2



How to initialize a 460106 control box with 2 motors (2011 program version)

1.

Take the control box and connect both motors to it. (when they are not in the lift)

Put the manual control in the control box (It could also be the connector with the 3 wires (blue, red and green))

Put the power plug in.

Push both buttons on the manual control (or connect all 3 wires) until the beep intermediates

When this is done, push the 'UP' button (or connect the blue wire with the red wire). 1 motor will retract.

Now, push the 'DOWN' button (or connect the blue wire with the green wire), the second motor will retract

When the 2nd motor is initialized, the control box stops beeping.

Be sure to run this complete sequence within a short amount of time, because the control box will only be in program mode for a short period.

2.

When the motors are already mounted in a lift, make sure that the lift is opened, so that the motors are completely retracted.

Push both buttons on the manual control (or connect all 3 wires) until the beep intermediates

When this is done, push the 'UP' button (or connect the blue wire with the red wire). 1 motor will retract.

Now, push the 'DOWN' button (or connect the blue wire with the green wire), the second motor will retract

When the 2nd motor is initialized, the control box stops beeping.

Be sure to run this complete sequence within a short amount of time, because the control box will only be in program mode for a short period.

If you experience technical difficulties during use, the following problems can occur:

There is no pulse:

The motors stop moving

Push both buttons on the manual control (or connect the 3 wires) until the beep intermediates

When this is done, push the button 'UP' (or connect blue and red), 1 motor retracts

Now, push the 'DOWN' button (or connect blue and green), the other motor retracts

When the 2nd motor is initialized, the control box stops beeping.

The lift is now ready for use

There is no connection to the motors (the plug is unplugged)

Both motors stop.

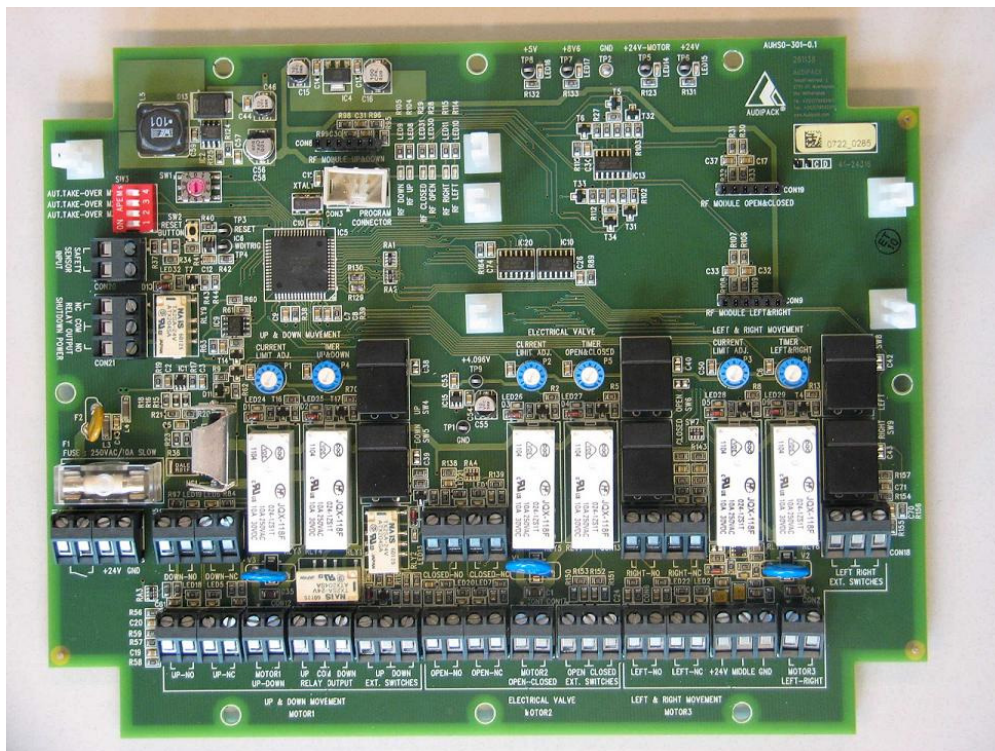
After regaining connection, the motors will only retract

If you keep the button 'UP' pushed, the motors will stop in the 'zero' position (The lift will completely open), and the lift is ready for use again.

261138 3-weg laagspanningsbesturing

Installation manual relay control ref. 261138 (version 0.1)

261138 3-way low voltage control



(voorbeeld besturing 261138) (example control board 261138)

Opmerking:

Uw product is voorzien van een besturing volgens onderstaand principe.
Deze besturing is speciaal ontwikkeld voor het aansturen van zelfremmende 24 Volt laagspanningsmotoren.

Alvorens de installatie te beginnen dienen de voorschriften op pagina 9 te worden aangehouden.

Note:

*Your Audipack product is equipped with a relay control as below
This control has been designed to control a self-braking 24 volt low voltage motor*

Before starting the installation, be sure to use the directives on page 9

Waarschuwingen:

De besturing is niet geschikt voor hoog toerental motoren.
De besturing mag nooit worden overbelast.
De besturing dient altijd in een daarvoor geschikte behuizing geplaatst te worden.
De aangesloten draadaderen dienen met een kabelbinder (zie verder) samengebonden te worden.
De besturing is alleen geschikt voor zelfremmende 24 Volt laagspanningsmotoren

Cautions:

*The relay control is not suited to high revving motors
Never overload the relay control
The relay control should always be mounted inside an appropriate housing
The wiring which is connected to the relay control has to be wrapped by a tie-rip (see below)
The relay control is only suited for self breaking low voltage motors.*

Eigenschappen:

De besturing is in staat een 1 tot 3 stuks 24 volt laagspanningsmotoren linksom of rechtsom te laten draaien.
Alvorens de draairichting om te zetten zal de motor eerst geremd worden.

Het is mogelijk de motor een voor ingestelde looptijd te laten draaien (impuls push).

Om de veiligheid te verhogen van de besturingsprint is het mogelijk de print met 2 externe metingen te beveiligen.

Indien het product in actie is, kan een radar of veiligheidsscherm de desbetreffende beweging stop zetten. Indien er zich een klemgevaar voordoet kan met een extern genormaliseerd veiligheidsrelais de gehele besturing spanningsloos gesteld worden.

Properties:

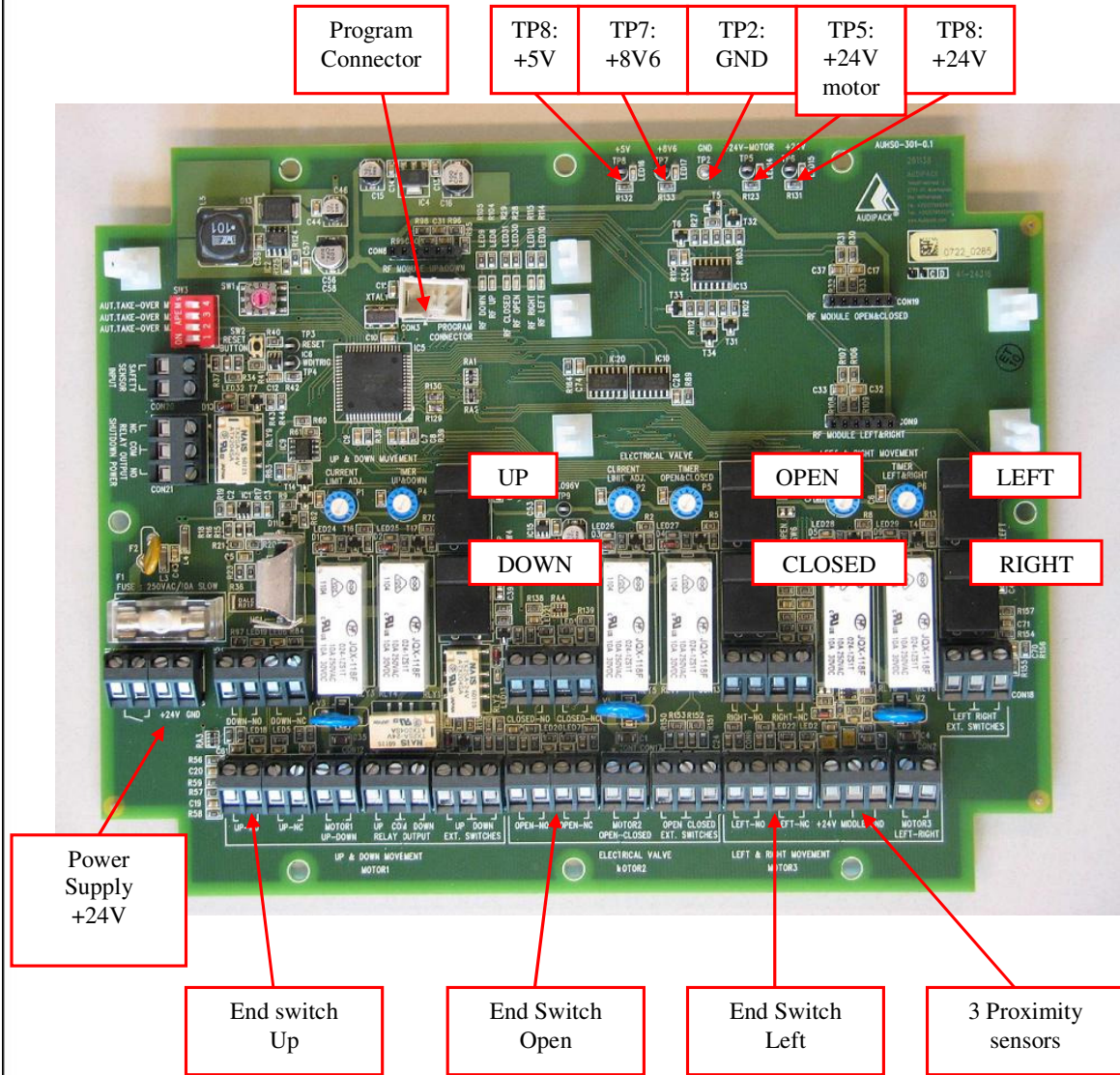
*The relay control can make 1 to 3 low voltage motors (up to 24V) left or right wise
The motor needs to be stopped before switching the rotation direction.*

With the use of the impulse push, it is possible to run for a pre-set time

To increase the safety level of the relay control, it is possible to connect 2 different safety-relay (i.e. an emergency button and a proximity radar). When your Audipack product is activated, a radar or safety screen (or other safety device) can stop the specific motion. If there is a possibility of getting stuck between moving parts of your product, you can make the product powerless with a standardized relay.

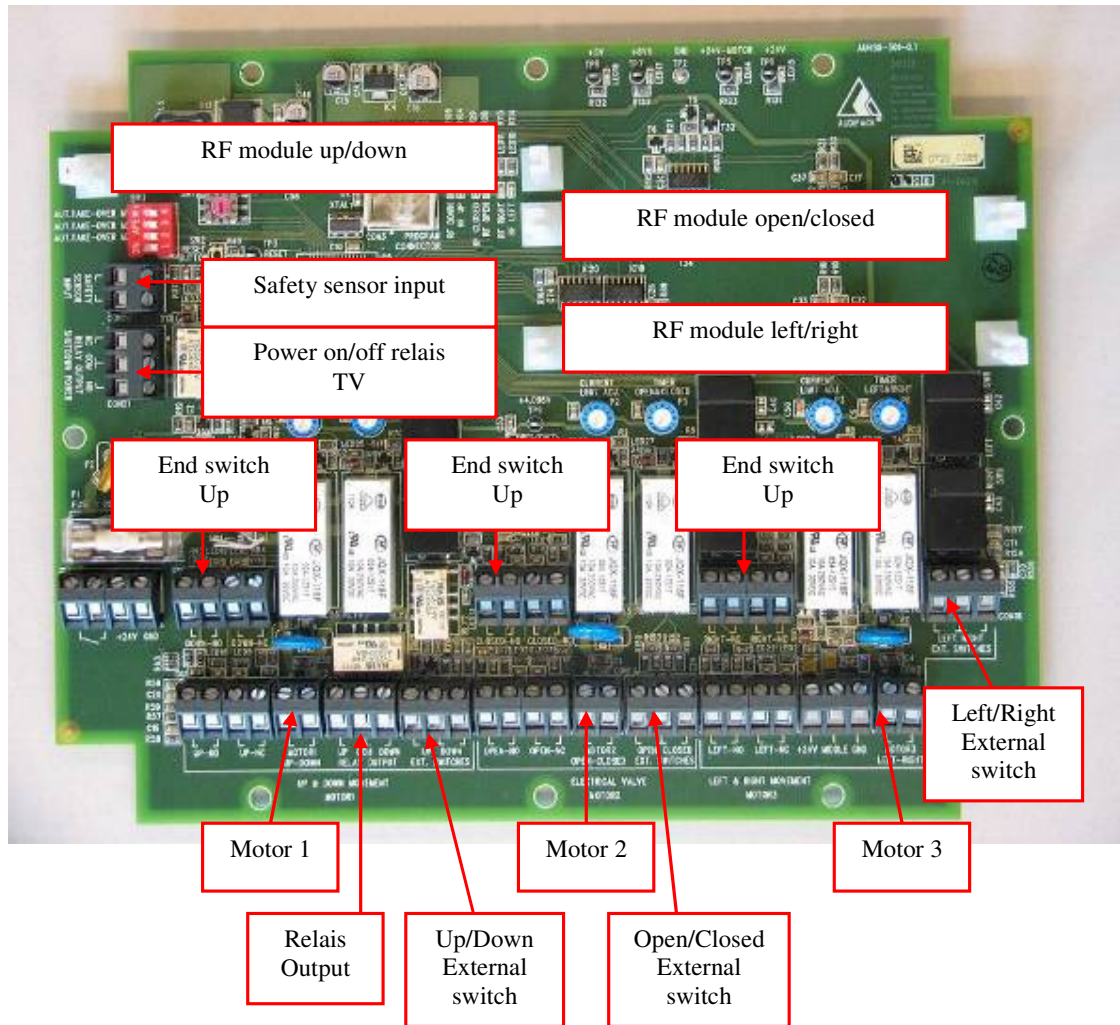
Overzicht 1

Overview 1



Overzicht 2

Overview 2



Omschrijving connector-aansluitingen:

Description connectors:

Motor 1

24 Volt motoraansluiting.

Pin 1 = motorvoeding + (24 volt 10A.)

Pin 2 = motorvoeding -

Motor 1

24 Volt motor connection.

Pin 1 = motor power supply + (24 volt 10A.)

Pin 2 = motor power supply -

Relais output

Potentiaal vrije aansluitpunt voor het aansturen van externe motorvoedingen.

Pin 1 = Schakelaaraansluiting NC

Pin 2 = Common

Pin 3 = Schakelaaraansluiting NO

Relay output

Potential free extra connection for external motor control

Pin 1 = Switch connection NC

Pin 2 = Common

Pin 3 = Switch connection NO

IR/ RF module op/neer

Insteekmodule voor draadloze bediening van deze motor.

IR/RF module up/down

Plug-in module for wireless control of this motor

Eindschakelaar OP:

Aansluiten eindschakelaar OP van motorbeweging 1.

Er dient een schakelaar toegepast te worden die een geforceerde maak en verbreek contact heeft.

De schakelaar moet dan ook volledig bedraad worden.

Pin 1 = Schakelaaraansluiting NC

Pin 2 = Common

Pin 3 = Schakelaaraansluiting NO

Pin 4 = Common

End switch UP:

Connection for end switch UP for motor motion 1

A switch must be used which has a forced make and a break contact. The switch has to be wired completely

Pin 1 = Switch connection NC

Pin 2 = Common

Pin 3 = Switch connection NO

Pin 4 = Common

Eindschakelaar NEER:

Aansluiten eindschakelaar NEER van motorbeweging 1.

Er dient een schakelaar toegepast te worden die een geforceerde maak en verbreek contact heeft.

De schakelaar moet dan ook volledig bedraad worden.

Pin 1 = Schakelaaraansluiting NC
Pin 2 = Common
Pin 3 = Schakelaaraansluiting NO
Pin 4 = Common

End switch DOWN:

Connection for end switch DOWN for motor motion 1

A switch must be used which has a forced make and a break contact. The switch has to be wired completely

Pin 1 = Switch connection NC
Pin 2 = Common
Pin 3 = Switch connection NO
Pin 4 = Common

Motor 2

24 Volt motoraansluiting

Pin 1 = motorvoeding + (24 volt 10A.)
Pin 2 = motorvoeding -

Motor 2

24 Volt motor connection.

Pin 1 = motor power supply + (24 volt 10A.)
Pin 2 = motor power supply -

IR/ RF module open/dicht

Insteekmodule voor draadloze bediening van deze motor.

IR/RF module up/down

Plug-in module for wireless control of this motor

Eindschakelaar Open:

Aansluiten eindschakelaar OPEN van motorbeweging 2.

Er dient een schakelaar toegepast te worden die een geforceerde maak-en verbreek contact heeft.

De schakelaar moet dan ook volledig bedraad worden.

Pin 1 = Schakelaaraansluiting NC
Pin 2 = Common
Pin 3 = Schakelaaraansluiting NO
Pin 4 = Common

End switch OPEN:

Connection for end switch OPEN for motor motion 2

A switch must be used which has a forced make and a break contact. The switch has to be wired completely

Pin 1 = Switch connection NC
Pin 2 = Common
Pin 3 = Switch connection NO
Pin 4 = Common

Eindschakelaar Dicht:

Aansluiten eindschakelaar OP van motorbeweging 2.

Er dient een schakelaar toegepast te worden die een geforceerde maak en verbreek contact heeft.

De schakelaar moet dan ook volledig bedraad worden.

Pin 1 = Schakelaaraansluiting NC
Pin 2 = Common
Pin 3 = Schakelaaraansluiting NO
Pin 4 = Common

End switch CLOSE:

Connection for end switch CLOSE for motor motion 2

A switch must be used which has a forced make and a break contact. The switch has to be wired completely

Pin 1 = Switch connection NC
Pin 2 = Common
Pin 3 = Switch connection NO
Pin 4 = Common

Motor 3

24 Volt motoraansluiting.

Pin 1 = motorvoeding + (24 volt 10A.)
Pin 2 = motorvoeding -

Motor 3

24 Volt motor connection.

Pin 1 = motor power supply + (24 volt 10A.)
Pin 2 = motor power supply -

IR/ RF module links/rechts

Insteekmodule voor draadloze bediening van deze motor.

IR/RF module up/down

Plug-in module for wireless control of this motor

Eindschakelaar Links:

Aansluiten eindschakelaar Links van motorbeweging 3.

Er dient een schakelaar toegepast te worden die een geforceerde maak en verbreek contact heeft.

De schakelaar moet dan ook volledig bedraad worden.

Pin 1 = Schakelaaraansluiting NC
Pin 2 = Common
Pin 3 = Schakelaaraansluiting NO
Pin 4 = Common

End switch Left:

Connection for end switch Left for motor motion 3

A switch must be used which has a forced make and a break contact. The switch has to be wired completely

Pin 1 = Switch connection NC
Pin 2 = Common
Pin 3 = Switch connection NO
Pin 4 = Common

Eindschakelaar Midden positie:

Aansluiten inductieve benaderingsschakelaar Midden van motorbeweging 3.

Er dient een schakelaar toegepast te worden die een geforceerde maak en verbreek contact heeft.

De schakelaar moet dan ook volledig bedraad worden.

Pin 1 = Voeding +
Pin 2 = Voeding -
Pin 3 = Puls

End switch Center:

Connection for end inductive approach switch Center for motor motion 3

A switch must be used which has a forced make and a brake contact. The switch has to be wired completely

Pin 1 = Power supply +
Pin 2 = Power supply -
Pin 3 = Pulse

Eindschakelaar Rechts:

Aansluiten eindschakelaar Rechts van motorbeweging 3.

Er dient een schakelaar toegepast te worden die een geforceerde maak en verbreek contact heeft.

De schakelaar moet dan ook volledig bedraad worden.

Pin 1 = Schakelaaraansluiting NC
Pin 2 = Common
Pin 3 = Schakelaaraansluiting NO
Pin 4 = Common

End switch Right:

Connection for end switch Right for motor motion 3

A switch must be used which has a forced make and a break contact. The switch has to be wired completely

Pin 1 = Switch connection NC
Pin 2 = Common
Pin 3 = Switch connection NO
Pin 4 = Common

Safety sensor input

Aansluitstrook voor externe radar of lichtsluis voor fase 1 beveiliging.

Bij mogelijk klemgevaar gedetecteerd wordt de actieve beweging van het systeem gestopt.

Safety sensor input:

Connection strip for external radar or light gate for fase 1 security

When there is a possible danger of pinch off, the active motion of the system will be stopped

Emergency sensor input

Aansluitstrook voor extern veiligheidsrelais. Bij klemgevaar wordt het systeem volledig stil gelegd.

Emergency sensor input

Connection strip for external safety relay. When there is a possible danger of pinch off, the system will be shut down.

Power on/off relais

Relais voor het onderbreken van een externe voedingslus. Max. 230 Volt 2A.

Pin 1 = Schakelaar-aansluiting NC
Pin 2 = Common
Pin 3 = Schakelaaraansluiting NO

Power on/off relais

Relay for interrupting an external power loop. Max. 230 Volt 2A

*Pin 1 = Switch connection NC
Pin 2 = Common
Pin 3 = Switch connection NO*

Waarschuwingen en voorschriften:

Cautions and regulations:

Bediening en gebruik:

Operation and use:

-Indien de besturing gemonteerd wordt in een machine die gebruikt wordt in het bereik van omstanders, of gemonteerd boven omstanders moeten de onderstaande richtlijnen in acht genomen worden.

- *When the control in a system that will be used within reach of bystanders, the following instructions must be followed:*

-Indien er zich personen rondom, boven of onder het product bevinden mag het systeem niet geactiveerd worden.

-*When there are persons around, above or underneath the product, it is prohibited to operate the system*

Installatie:

Installation:

-Installatie en aansluitingen mogen alleen verricht worden door gekwalificeerd personeel.

-Installation and connections may only be carried out by qualified staff.

Het systeem moet altijd aangesloten worden op een randaarde stekkerdoos!

The system has to be connected to an grounded connector box at all times!

-Indien er geen netsnoer gemonteerd is aan *de voeding*, mag deze alleen gemonteerd worden volgens de montage instructies vernoemd onder:

**Aansluitsnoer moet voldoen aan (3x1mm²) EN60227
De randaarde stekker moet voldoen aan EN60083 of NEN1020**

- If a different cable has to be fitted, this has to be done according to following instructions:

***The power cable must accede (3x1 mm²) EN60227
The grounded power plug must accede EN60083 or NEN1020***

Printvoeding:

**Aansluitwaarden op de print 24 Volt 420VA.
Aansluitsnoer moet voldoen aan (2x1mm²) EN60227**

Power supply to relay control

***Nominal load on the print 24 Volt 420 VA
The power cable must accede (2x1 mm²) EN60277***

Aarding:

Te gebruiken een faston met een dubbele krimpverbinding. Zowel op het koper als op de isolatie. De faston dient met een bijbehorende tang gekrompen te worden. De faston moet gelijkwaardig zijn aan model: AMP 2-520407-2

Grounding

If you want to ground your relay control, this has to be done with a faston with double shrink connections. One on the copper, and one on the insulation of the ground cable. The faston needs to be shrunk with an appropriate pair of tongs. Use a faston identical model: AMP 2-520407-2

Instellingen:

Settings:

Impuls push:

Het is mogelijk de 3 verschillende motoren een voor ingestelde looptijd te laten draaien.

Alvorens deze functie gebruikt kan worden dient de dip-switch op de print geactiveerd te worden. De looptijd kan ingesteld worden met de potentiometer op de print. Gebruik passend gereedschap voor het instellen van de looptijd (maximale looptijd 240 seconden.) Indien de potentiometer rechtsom wordt ingesteld, wordt de looptijd verlengt.

Impuls push:

It is possible to run all 3 motors for a pre-set time

Before using this function, the dip-switch on the control board needs to be activated.

The pre-set run time can be adjusted with the potentiometer on the control board

Use the right tools to set the run time. (maximum time to run is 240 seconds)

If you turn the potentiometer to the right, the run time will be longer.

Extern veiligheidsrelais of noodknop-aansluiting.

Indien de installatie (machine) voorzien moet worden van een veiligheids relais of noodknop, kan deze aangesloten worden op positie 1 en 2 van connector 1.

De doorverbinding moet verwijderd worden alvorens deze aansluiting te gebruiken.

External safety relay or emergency button connection.

If the system or product has to be equipped with an external safety relay or emergency button, this can be connected to pin 1 and 2 on connector 1. The loop wire must be removed before using this connection.

Technische gegevens en aansluitwaarden:

Aansluitwaarden: 24 Volt 420 VA.
Aansluitsnoer moet voldoen aan (2x1mm²) EN60227

Technical data and nominal load:

Nominal load: 24 Volt 420 VA
Power cable must accede to (2x1 mm²) EN60227

Mechanische belasting van het systeem.

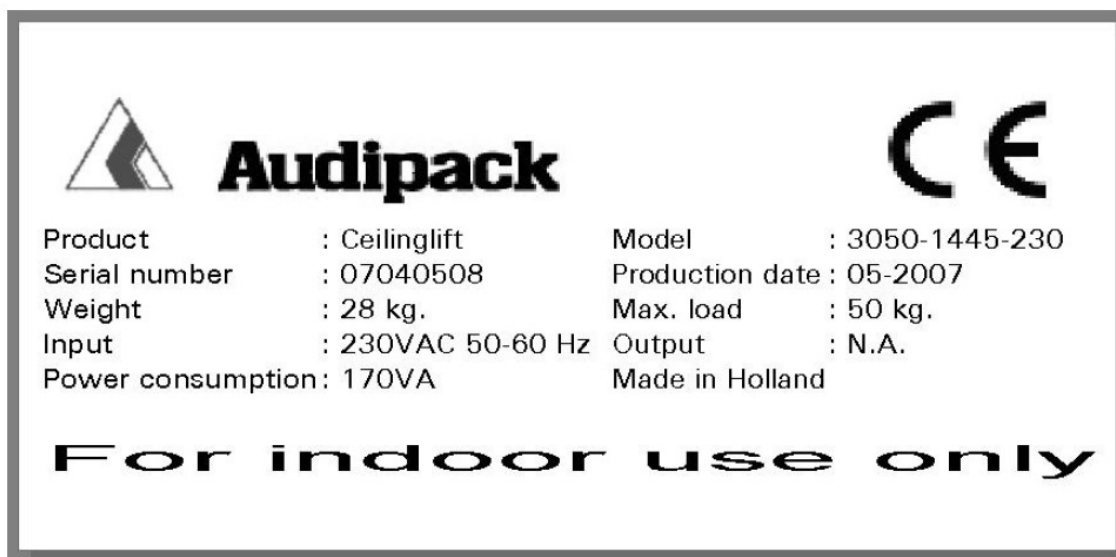
Bij het installeren van het product dient er rekening gehouden te worden met de maximale belasting van het systeem. De belastingswaarde van het systeem is terug te vinden op het typeplaatje op het systeem.

Een voorbeeld typeplaatje is onder getoond.

Mechanical load of the system.

When installing the system, you must consider the maximal load of the system. The maximal load is found on the type label on the system.

An example of this label is shown below.



© AUDIPACK

Let op!

Warning!

A.

Tijdens het bewegen van het product is het verplicht dat de bediener volledig zicht heeft op het product.

A.

While the product is in motion, the operator should have full sight over the product

B.

Het bedieningsconsole moet dermate geïnstalleerd zijn dat de bediener altijd zicht heeft op het product.

B.

The control buttons have to be installed in a place which offers the operator full sight over the product.

C.

Er mogen zich geen personen bevinden onder het product, of binnen de draaicirkel van het product, indien het laagste punt van de totale constructie zich lager bevindt dan 2 meter. 2 meter is gemeten van de vloer tot het laagste onderdeel van de constructie.

C:

No bystanders may stand under the product, or within the working radius of the product, if the lowest point of the product is less than 2 meters above the floor.

D.

Indien het product tijdens functie of testen schade vertoont, dient het product direct uit bedrijf genomen te worden. De reparatie dient door een erkend bedrijf uitgevoerd te worden. De vrijgave van het product dient door een erkend bedrijf vastgesteld te worden.

D.

If the product shows up damage during testing or normal operation, the product should be taken out of service. The product should be repaired by a qualified installer. Release after reparation should also be done by a qualified installer.

E.

Bij breuk of schade aan het product dient de bediener de reparatie door een erkend bedrijf of Audipack uit te laten voeren.

E.

If the product is damaged or fractured, the operator should have the product repaired by a qualified installer, or return it to Audipack.

Installatievoorschrift:

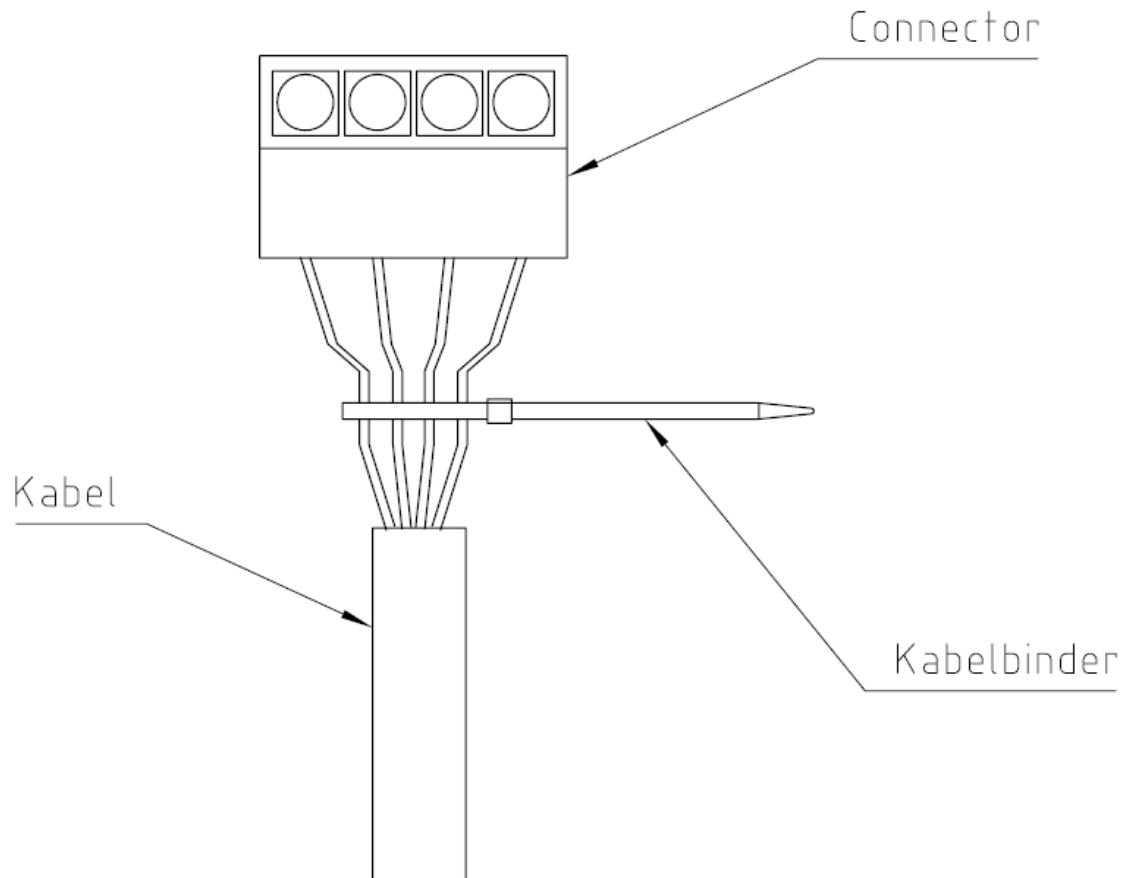
Installation manual:

Samenbinden.

De bedrading van de aansluitkabels dienen met een extra kabelbinder samengebonden te worden. Dit beveilgd het vrij uitvallen van de draad uit de connector. De kabelbinder zorgt ervoor dat de losse draden te allen tijde in de connector blijven zitten

Binding:

The wires of the connection cables must be strapped together with a tie rap to prevent the wires from falling out of the connector. The tie rap will keep the loose wires in the connector.

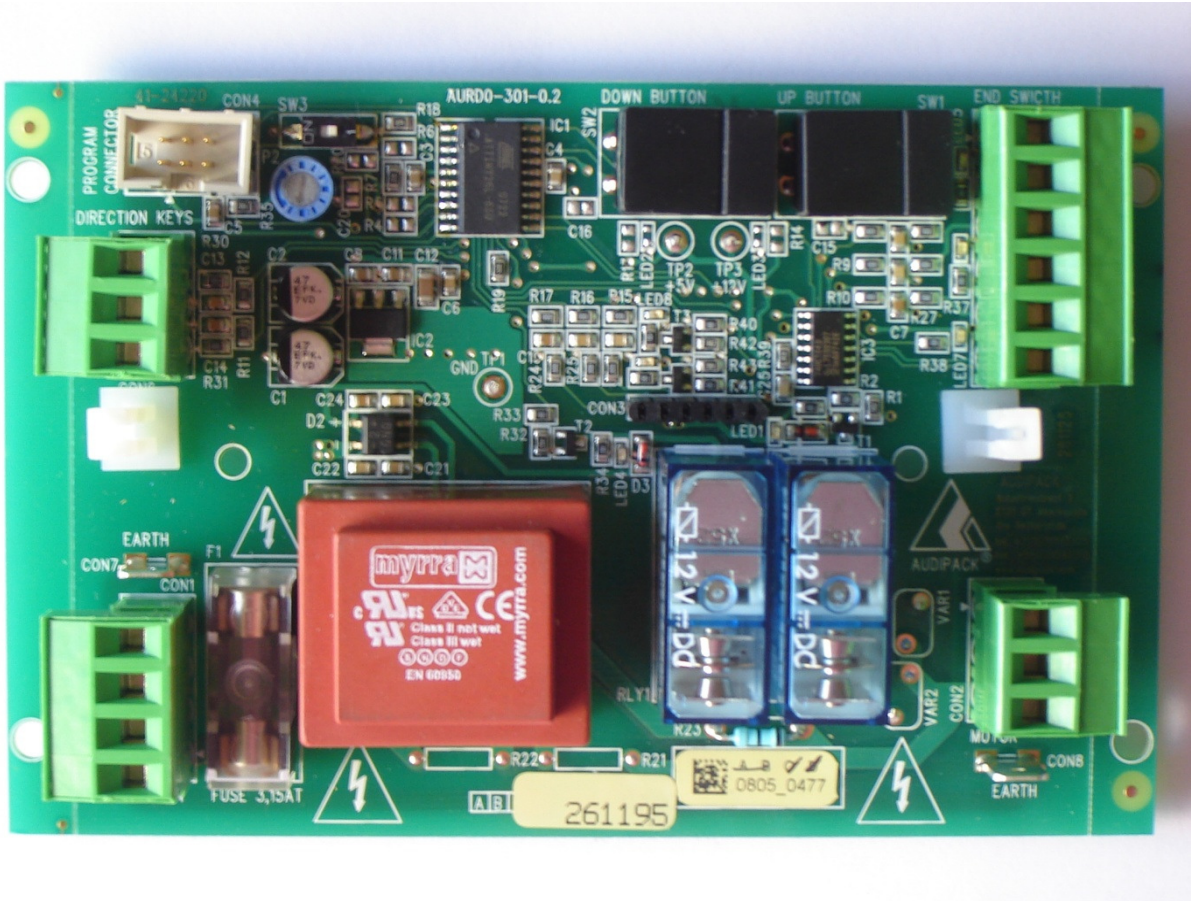


Notities:

Notes:

Installation manual potential free relay control ref. 261195

261195 potential free relay control



Index

Common Information..... 3

Warning 4

Connections and settings..... 5

Technical specifications 6

Installation instructions..... 7

Installation diagram: 8

Common Information

Note:

Your Audipack product is equipped with a potential free relay control as below.

This control has been designed to control **an external product** suitable for controlling by contact closures.

This type of control is also available as a set inclusive a IR remote set part no. 260218 or as an RF remote control set part no. 260219. Refer to the manual of the IR and RF module for connecting and programming.

Cautions:

The relay control is not suited to high revving motors

Do never overload the relay control

The relay control should always be mounted inside an appropriate housing

The wiring which is connected to the relay control has to be wrapped by a tie-rape

The relay control may only be plugged to a grounded power-point

Properties:

The relay control can control an external system.

This is by using contact closures (as in a potential free relays.)

This can be done for example with a wall mounted switch or home domotica system. Be sure that the external control has a 'zero' position.

The motor needs to be braked before switching the direction

It is possible to have the motor run for a pre-set time (impulse push).

It is possible to connect a safety relay to the control print (i.e. for an emergency button). The connector is suited only to an external standardized relay.

If the relay control is mounted in machines used within the reach of bystanders, or over bystanders, the following safety guidelines have to be observed.

Installation and connections may only be carried out by qualified staff

If a different power cable has to be fitted, this has to be done following the below instructions:

The power cable must be conform (3x1 mm²) EN60227

The earth power plug must be conform EN60083 or NEN1020

A faston with double crimp has to be used, both on copper and on the isolation. The faston has to be crimped with an appropriate pair of tongs. Use a faston identical model: AMP 2-520407-2

If there are bystanders around, over or under the machine:

Warning

A.

While the machine is in motion, the operator should have full sight over the machine

B.

The control buttons have to be installed in a place which offers the operator full sight over the machine

C.

No bystanders may stand under the machine, or within the radius of the machine, if the lowest point of the machine is less than 2 meters above the floor.

D.

If the machine shows up damage during testing or normal operation, the machine should be taken out of service. The machine should be repaired by a qualified installer. The machine should be released by a qualified installer.

E.

If the machine is damaged or fractured, the operator should have the machine repaired by a qualified installer or by Audipack.

Connections and settings

Description connectors

Connector 1:

Main current connector 230 V 50-60 Hz. (Y connector)

Pin 1: safety relay (potential free)
Pin 2: safety relay (potential free)
Pin 3: L connection
Pin 4: N connection
Pin 5: earth connection

Connector 2:

External system connection **Potential free**

Pin 1: direction UP
Pin 2: direction DOWN
Pin 3: neutral
Pin 4: -----

Connector 3:

Optional IR/RF PCB connector

Connector 4:

Programming connector

Connector 5:

All below connections are potential free contacts

Pin 1: over service position switch (not for all products)
Pin 2: GND
Pin 3: end switch UP
Pin 4: GND
Pin 5: end switch DOWN
Pin 6: GND

Connector 6:

All below connections are potential free contacts

Pin 1: external control DOWN
Pin 2: GND
Pin 3: external control UP

SW3:

Print switch impulse push

1 = OFF
ON = ON

Impulse push

It is possible to activate the external system for a preset time.

Before the impulse push can be activated, the dip/switch on the print has to be activated. The running time can be preset with the potentiometer on the print. Use exactly fitting tools to set the running time. Turn the potentiometer to the right to increase the running time (maximally 240 seconds).

External safety relay or emergency button connection

If a safety relay or emergency button is required, this can be connected to position 1 and 2 of connector 1. The connection loop has to be removed before using this connection.

Technical specifications

PCB:

230 Volt 50 Hz. 500 VA

The power cable must be conform (3x1 mm²) EN60227

The earth power plug must be conform EN60083 or NEN1020

Female Faston:

RoHS compliant

ELV compliant

Lead Free Solder Processes = Not relevant for lead free process

Receptacle

Tab Fit = 6.35 x 0.81 mm

Wire Range = 0.30-0.90² [22-18] mm [AWG]

Insulation Diameter = 1.52-2.54 [.060-.100] mm [in]

Receptacle Style = Straight

Wire/Cable Type = Regular Wire

Strip

Tin Finish

Brass Material

Normal Insertion Force

With Insulation Support

Line = FASTIN-FASTON .250

Crimp Type = "F"

Always was RoHS compliant

Stock Thickness = .30 mm

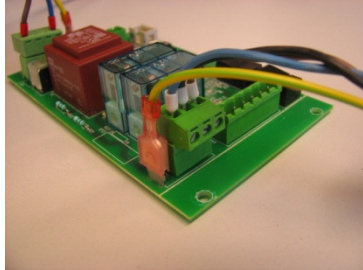
For Housing Type = Multiple

UL Rating = Recognized

Installation instructions

1a.

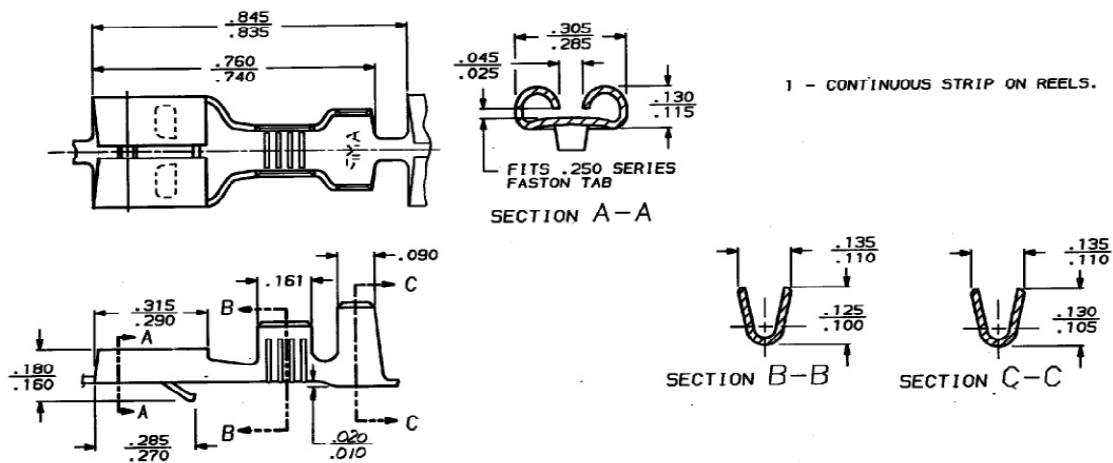
Connecting the print to earth should be carried out using faston connectors



1b.

Technical specifications and conditions

The instructions of the tools have to be followed for the fitting of the connectors.

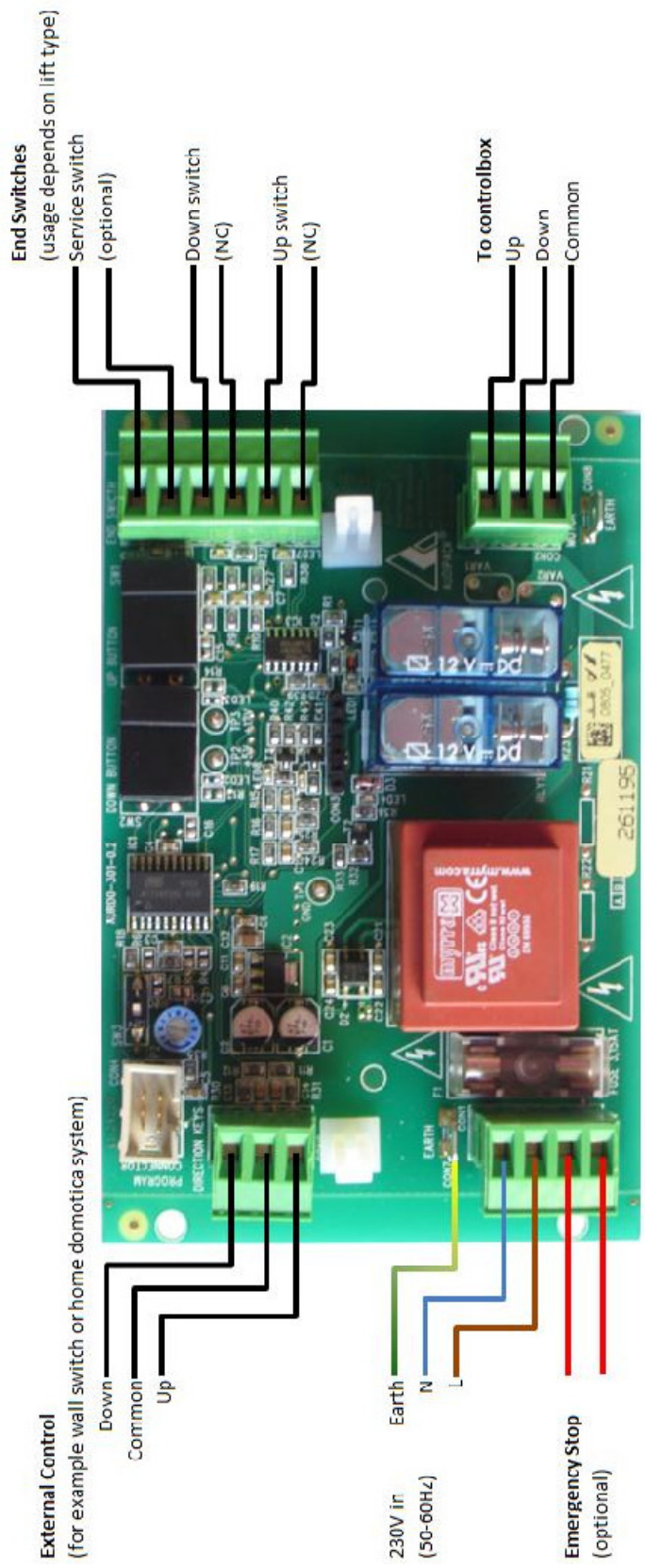


1c.

Binding the wiring together

All wiring must be wrapped together by a tie-rip to prevent the wiring from falling out of the connector. The tie-rip will always keep the loose thirds in the connector.

Installation diagram:





Audipack ®
www.audipack.com
Industriestraat 2-4
2751 GT Moerkapelle
The Netherlands
audipack@audipack.com



Product : 3-way relays print
Type : 26113 version AU 50-301-0.2

D **Konformitätserklärung für Maschinen**

Wir erklären hiermit daß die Produkte konform sind mit den einschlägigen Bestimmungen der EG-Maschinen richtlinie:

Maschinenrichtlinie 89/392/EEG mit 91/368/EEG und 93/44/EEG
EMC 89/336/EEG mit EN 55014 und EN 55104
Niederspannung 73/23/EEC mit EN 60335/1

F **Declaration CE de Conformite pour les machines**

Nous declare que les produits sont en conformité avec la Directive pour les machines

Machine 89/392/EEG with 91/368/EEG and 93/44/EEG
EMC 89/336/EEG with EN 55014 and EN 55104
(Low voltage 73/23/EEC with EN 60335/1)

GB **EC-declaration of conformity for machines**

We declare that aforesaid product is constructed in compliance with the following directives with the following directives

Machine 89/392/EEG with 91/368/EEG and 93/44/EEG
EMC 89/336/EEG with EN 55014 and EN 55104
(Low voltage 73/23/EEC with EN 60335/1)

E **EC-Declaracio'n de la conformidad para las máquinas**

Declaramos que el producto antedicho está construido en conformidad con los directorios siguientes

Machine 89/392/EEG with 91/368/EEG and 93/44/EEG
EMC 89/336/EEG with EN 55014 and EN 55104
(Low voltage 73/23/EEC with EN 60335/1)

NL **EG-verklaring van overeenstemming voor machines**

Wij verklaren dat bovengenoemd produkt volgens de onderstaande normen en richtlijnen is geconstrueerd:

Machine 89/392/EEG with 91/368/EEG and 93/44/EEG
EMC 89/336/EEG with EN 55014 and EN 55104
(Low voltage 73/23/EEC with EN 60335/1)

S **EG-försäkran om överensstämmelse**

Tillverkare försäkrar härmed att produkt är tillverkade i överensstämmelse med EG's Maskindirektiv:

Machine 89/392/EEG with 91/368/EEG and 93/44/EEG
EMC 89/336/EEG with EN 55014 and EN 55104
(Low voltage 73/23/EEC with EN 60335/1)

Moerkapelle (NL), 24-11-2006

Audipack,
R&D



Audipack ®
www.audipack.com
Industriestraat 2-4
2751 GT Moerkapelle
The Netherlands
audipack@audipack.com



Product : lat Panel lip Down Lift
Type : arious Models

D Konformitätserklärung für Maschinen

Wir erklären hiermit daß die Produkte konform sind mit den einschlägigen Bestimmungen der EG-Maschinen richtlinie:

Maschinenrichtlinie 89/392/EEG mit 91/368/EEG und 93/44/EEG
EMC 89/336/EEG mit EN 55014 und EN 55104
Niederspannung 73/23/EEC mit EN 60335/1

F Declaration CE de Conformite pour les machines

Nous declare que les produits sont en conformité avec la Directive pour les machines

Machine 89/392/EEG with 91/368/EEG and 93/44/EEG
EMC 89/336/EEG with EN 55014 and EN 55104
(Low voltage 73/23/EEC with EN 60335/1)

GB EC-declaration of conformity for machines

We declare that aforesaid product is constructed in compliance with the following directives with the following directives

Machine 89/392/EEG with 91/368/EEG and 93/44/EEG
EMC 89/336/EEG with EN 55014 and EN 55104
(Low voltage 73/23/EEC with EN 60335/1)

E EC-Declaracio'n de la conformidad para las máquinas

Declaramos que el producto antedicho está construido en conformidad con los directorios siguientes

Machine 89/392/EEG with 91/368/EEG and 93/44/EEG
EMC 89/336/EEG with EN 55014 and EN 55104
(Low voltage 73/23/EEC with EN 60335/1)

NL EG-verklaring van overeenstemming voor machines

Wij verklaren dat bovengenoemd produkt volgens de onderstaande normen en richtlijnen is geconstrueerd:

Machine 89/392/EEG with 91/368/EEG and 93/44/EEG
EMC 89/336/EEG with EN 55014 and EN 55104
(Low voltage 73/23/EEC with EN 60335/1)

S EG-försäkran om överensstämmelse

Tillverkare försäkrar härmed att produkt är tillverkade i överensstämmelse med EG's Maskindirektiv:

Machine 89/392/EEG with 91/368/EEG and 93/44/EEG
EMC 89/336/EEG with EN 55014 and EN 55104
(Low voltage 73/23/EEC with EN 60335/1)

Moerkapelle (NL), 24-11-2006

Audipack,
R&D



Audipack ®
www.audipack.com
Industriestraat 2-4
2751 GT Moerkapelle
The Netherlands
audipack@audipack.com



Product : Potential free relais PCB
Type : 261195, AURD0-301-0.2

D Konformitätserklärung für Maschinen

Wir erklären hiermit daß die Produkte konform sind mit den einschlägigen Bestimmungen der EG-Maschinen richtlinie:

Maschinenrichtlinie 89/392/EEG mit 91/368/EEG und 93/44/EEG
EMC 89/336/EEG mit EN 55014 und EN 55104
Niederspannung 73/23/EEC mit EN 60335/1

F Declaration CE de Conformite pour les machines

Nous declare que les produits sont en conformité avec la Directive pour les machines

Machine 89/392/EEG with 91/368/EEG and 93/44/EEG
EMC 89/336/EEG with EN 55014 and EN 55104
(Low voltage 73/23/EEC with EN 60335/1)

GB EC-declaration of conformity for machines

We declare that aforesaid product is constructed in compliance with the following directives with the following directives

Machine 89/392/EEG with 91/368/EEG and 93/44/EEG
EMC 89/336/EEG with EN 55014 and EN 55104
(Low voltage 73/23/EEC with EN 60335/1)

E EC-Declaracio'n de la conformidad para las máquinas

Declaramos que el producto antedicho está construido en conformidad con los directorios siguientes

Machine 89/392/EEG with 91/368/EEG and 93/44/EEG
EMC 89/336/EEG with EN 55014 and EN 55104
(Low voltage 73/23/EEC with EN 60335/1)

NL EG-verklaring van overeenstemming voor machines

Wij verklaren dat bovengenoemd produkt volgens de onderstaande normen en richtlijnen is geconstrueerd:

Machine 89/392/EEG with 91/368/EEG and 93/44/EEG
EMC 89/336/EEG with EN 55014 and EN 55104
(Low voltage 73/23/EEC with EN 60335/1)

S EG-försäkran om överensstämmelse

Tillverkare försäkrar härmed att produkt är tillverkade i överensstämmelse med EG's Maskindirektiv:

Machine 89/392/EEG with 91/368/EEG and 93/44/EEG
EMC 89/336/EEG with EN 55014 and EN 55104
(Low voltage 73/23/EEC with EN 60335/1)

Moerkapelle (NL), 24-11-2006

Audipack,
R&D

Audipack reserves the right to make changes in specifications and other information contained in this document without prior written notice. The information provided herein is subject to change without notice. In no event shall Audipack be liable for any incidental, special, indirect, or consequential damages whatsoever, including but not limited to lost profits, arising out of or related to this manual or the information contained herein, even if Audipack has been advised of, known, or should have known, the possibility of such damages.



AUDIPACK
Industriestraat 2-4
2751 GT Moerkapelle
the Netherlands
Tel: +31(0)795931671
Fax: +31(0)795933115
www.audipack.com