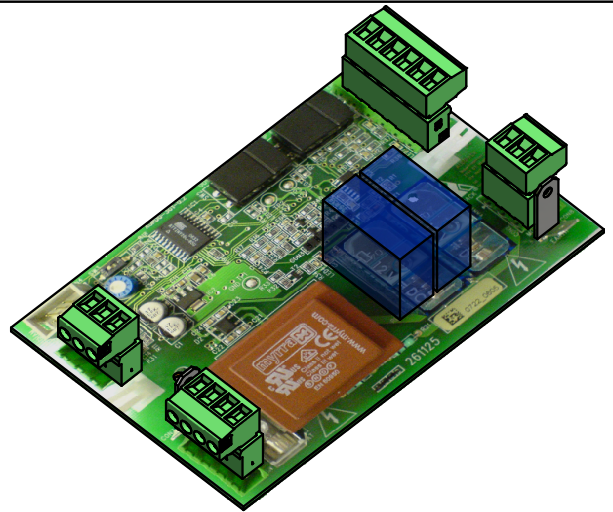
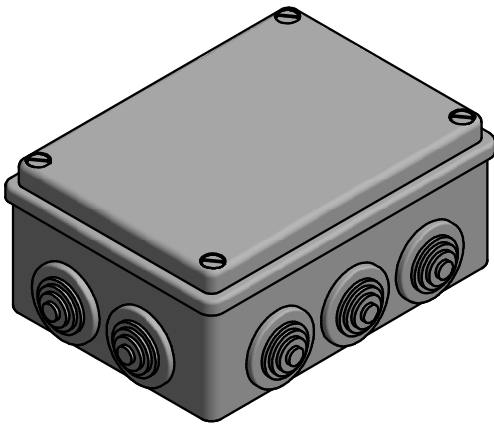


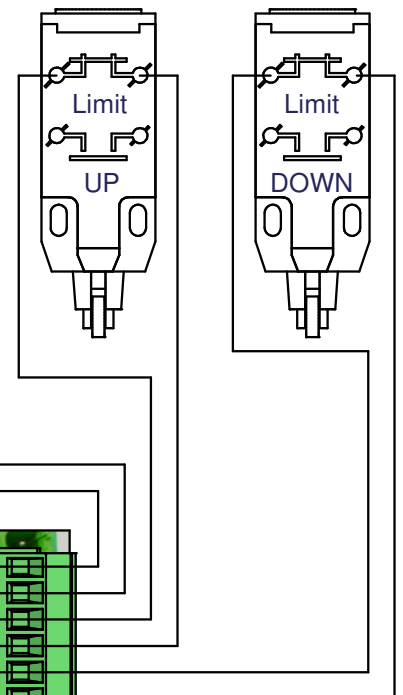
# 261125 MOTOR CONTROL BOX



**WARNING:**

This connection is for service purposes only!

When connecting these two connections, the DOWN limit switch will be passed, so that the lift can go lower than the normal down position. This feature is only to be used at great heights and with lifts with enough shears. (the cylindrical motor has end switches too, but be careful!)



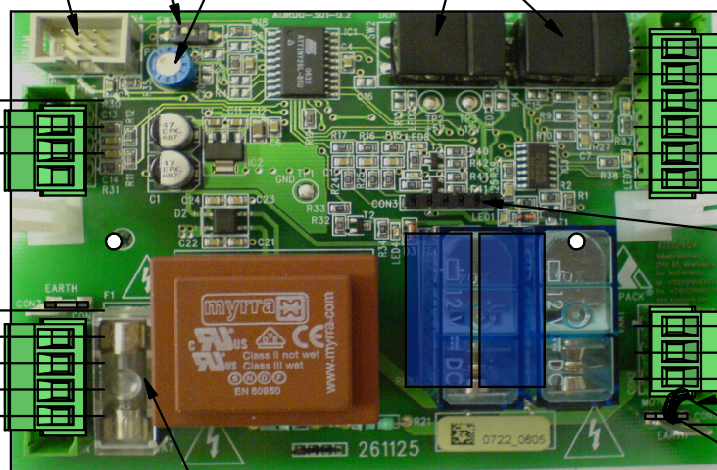
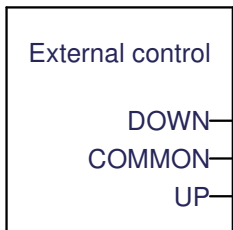
Pulse/Push:

1 = Push command (and hold)  
ON = Pulse command

Time Delay for pulse command

For factory use only

Service switches (up and down)



IR/RF-receiver print connector

Earth  
N (230 VAC 50Hz)  
L (230 VAC 50Hz)

UP (black or brown) Motor  
DOWN (black or brown) Motor  
COMMON (blue) Motor  
EARTH (yellow/green) Motor  
(max. 500 VA)

Safety switch (Normally Closed)

Fuse max. 3.15A

## Explanation UP and DOWN:

Lift:

UP = lift up,  
DOWN = lift down.

Hatch:

UP = hatch close,  
DOWN = hatch open.

Rotation:

UP = rotate to angle,  
DOWN = rotate to zero position.