

MEELEVEREN IN ZAKJE:

- 4X) DIN 934 - M8 - ST 8
- 4X) DIN 125-1 - A 8,4 - ST 8.8
- 1X) DIN 975 - M8 x 1000
- 12X) 392318
- of
- 12X) 392618

ITEM	QTY	PART NUMBER	DESCRIPTION	STANDARD
15	1	DIN 975 - M8 x 1000	Draadeind M8	
14	4	DIN 934 - M8 - ST 8	ZESKANTMOER	DIN 934
13	2	DIN 933 - M8x55 - ST 8.8	ZESKANTBOUT	DIN 933
12	4	DIN 933 - M6x80 - ST 8.8	ZESKANTBOUT	DIN 933
11	4	DIN 933 - M6x8 - ST 8.8	ZESKANTBOUT	DIN 933
10	2	DIN 933 - M6x50 - ST 8.8	ZESKANTBOUT	DIN 933
9	4	DIN 933 - M6x20 - ST 8.8	ZESKANTBOUT	DIN 933
8	6	DIN 125-1 - A 8,4 - ST 8.8	VLAKKE SLUITRING VOOR ZESKANT	DIN 125
7	4	DIN 125-1 - A 6,4 - ST 8.8	VLAKKE SLUITRING VOOR ZESKANT	DIN 125
6	2	642431	ARM VESA 400 TRIPLE	
5	2	631312	STELPLAAT	
4	2	6401143	STELPLAAT	
3	4	440005	Nylon Ring Ø6.4x18x2	
2	12	392618	MONTAGE NOK M6	
1	12	392318	MONTAGE NOK M8	

**AUDIPACK**  
 Industriestraat 2  
 2751 GT Moerkapelle  
 the Netherlands  
 tel. +31(0)795931671  
 fax. +31(0)795933115  
 www.Audipack.com

© COPYRIGHT AUDIPACK  
 This print and the information shown thereon, is the property of AUDIPACK.  
 It may not be delivered to others nor reproduced for general circulation without the written consent of the AUDIPACK engineering department.

Material:  
Thickness:  
Treatment:

Name: Ton Date: 8-8-2016

Drawn by: Checked by: Appr. by:

Description: **INHANGARM drie-voudig**

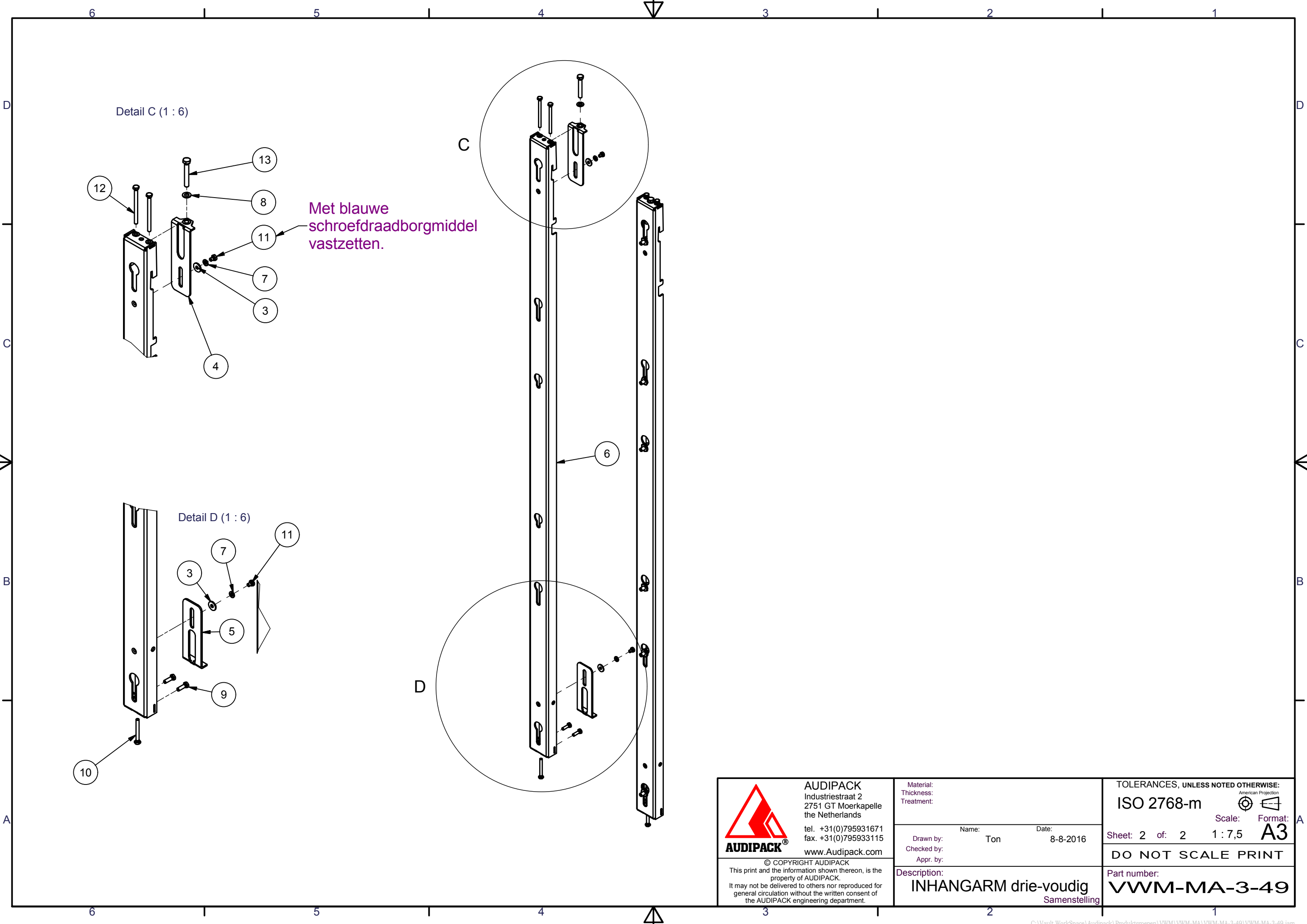
TOLERANCES, UNLESS NOTED OTHERWISE:  
**ISO 2768-m**

Scale: 1 : 8 Format: **A3**

Sheet: 1 of: 2

**DO NOT SCALE PRINT**




Part number:  
**VWM-MA-3-49**



Met blauwe  
schroefdraadborgmiddel  
vastzetten.

Detail C (1 : 6)

Detail D (1 : 6)

 <p><b>AUDIPACK</b> Industriestraat 2 2751 GT Moerkapelle the Netherlands tel. +31(0)795931671 fax. +31(0)795933115 www.Audipack.com</p> <p>© COPYRIGHT AUDIPACK This print and the information shown thereon, is the property of AUDIPACK. It may not be delivered to others nor reproduced for general circulation without the written consent of the AUDIPACK engineering department.</p>	<p>Material: Thickness: Treatment:</p>	<p>TOLERANCES, UNLESS NOTED OTHERWISE: ISO 2768-m </p> <p>Scale:  Format: <b>A3</b></p>
	<p>Name: Ton Date: 8-8-2016</p> <p>Drawn by: _____ Checked by: _____ Appr. by: _____</p>	<p>Sheet: 2 of: 2 1:7,5</p> <p><b>DO NOT SCALE PRINT</b></p>
<p>Description: <b>INHANGARM drie-voudig</b> Samenstelling</p>	<p>Part number: <b>VWM-MA-3-49</b></p>	