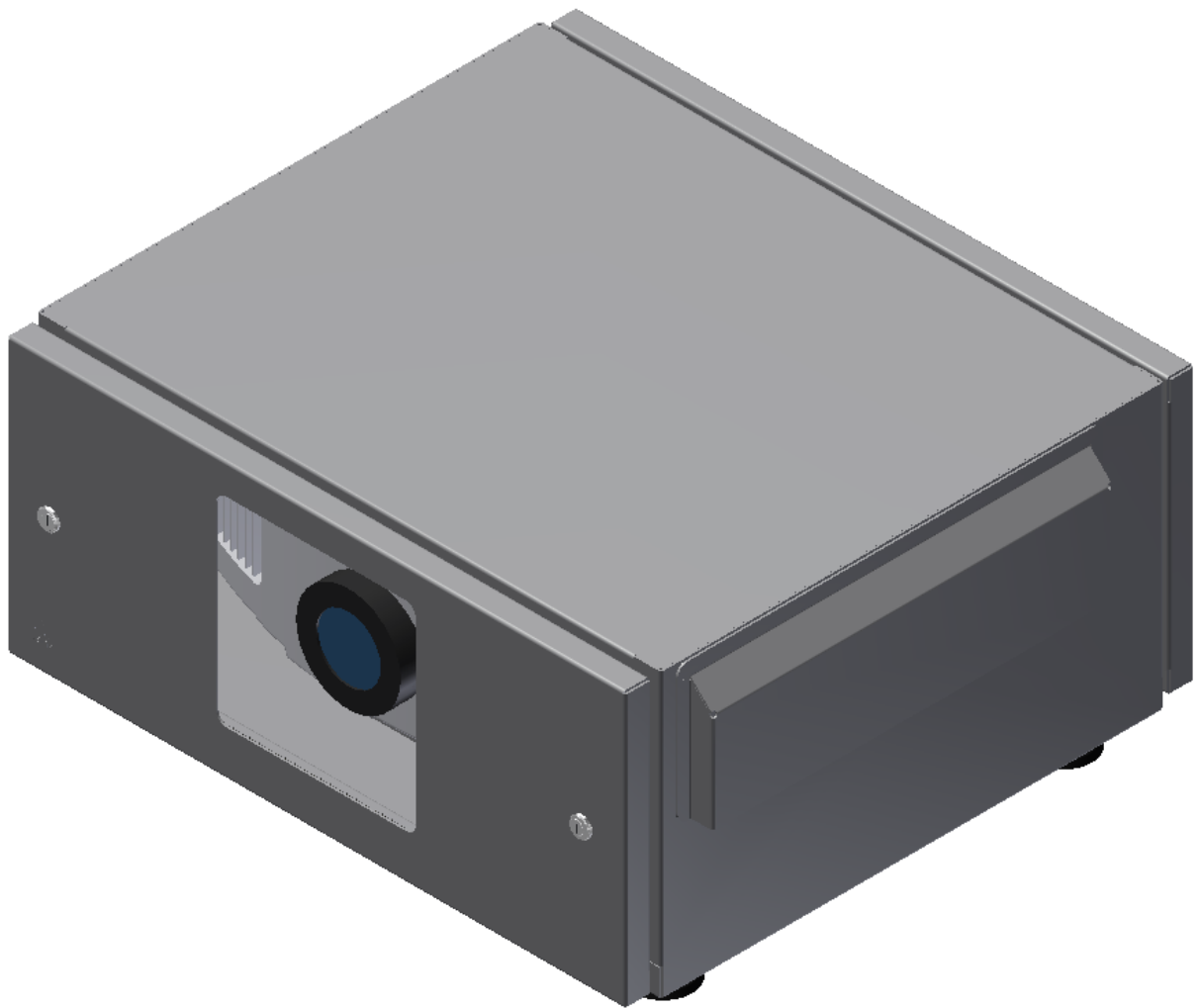


# Universal projector outdoor housing

## Mounting instructions



**This is a universal manual that generally instructs how to install a projector housing. Form and shape of a housing can vary from the applicable one but function, installation and temperature setting are equal.**

**1.**

When the housing is installed to the a ceiling please use the tube set's guide for a proper installation. Use all mounting facilities available.

Determine the position of a housing with care!.

Keep mind that the projector housing must be installed out of range of people (vandalism and theft).

**Keep in mind that direct sunlight may interfere the function of the ventilation / airflow of the housing. Sun radiation directly on the hoding can result in heating up the housing.**

**For extreme temperaturs (above 30 degrees Celcius)) Audipack provides active cooled housings.**

**With extreme temperaturs remove the projector from the housing.**



**2.**

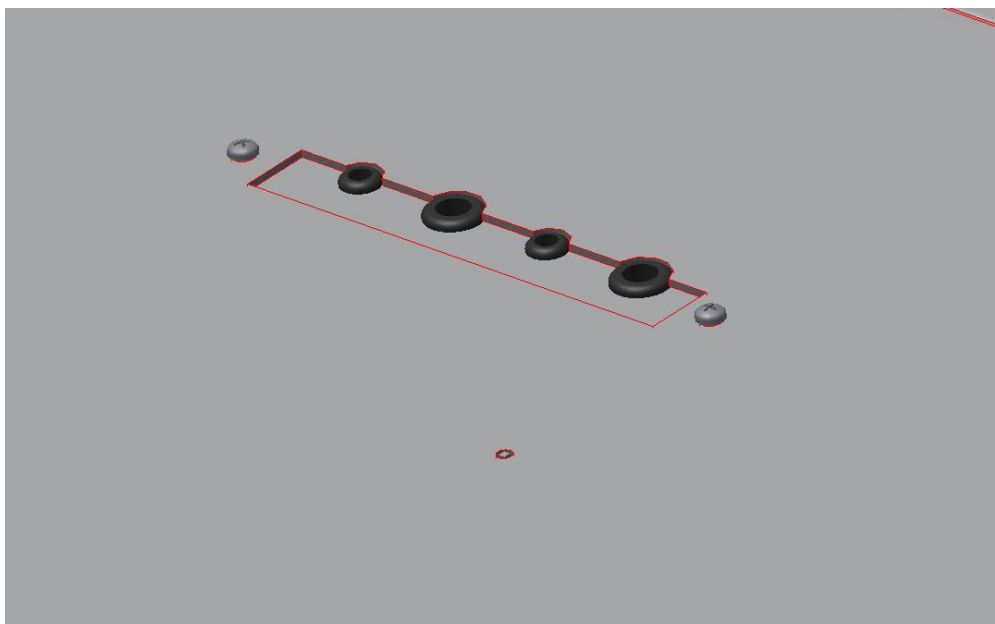
When the ceiling mount or ground pole is installed, the housing can be attached to that mounting option.

Use galvanized or stainless steel bolts for a proper installation.

Guide the projector cables through the cable inlet of the housing.

Make sure the rubber seals fit around the choosen cable; use a liquid seal to close possible gaps.

Remove the plate and run the cables through.



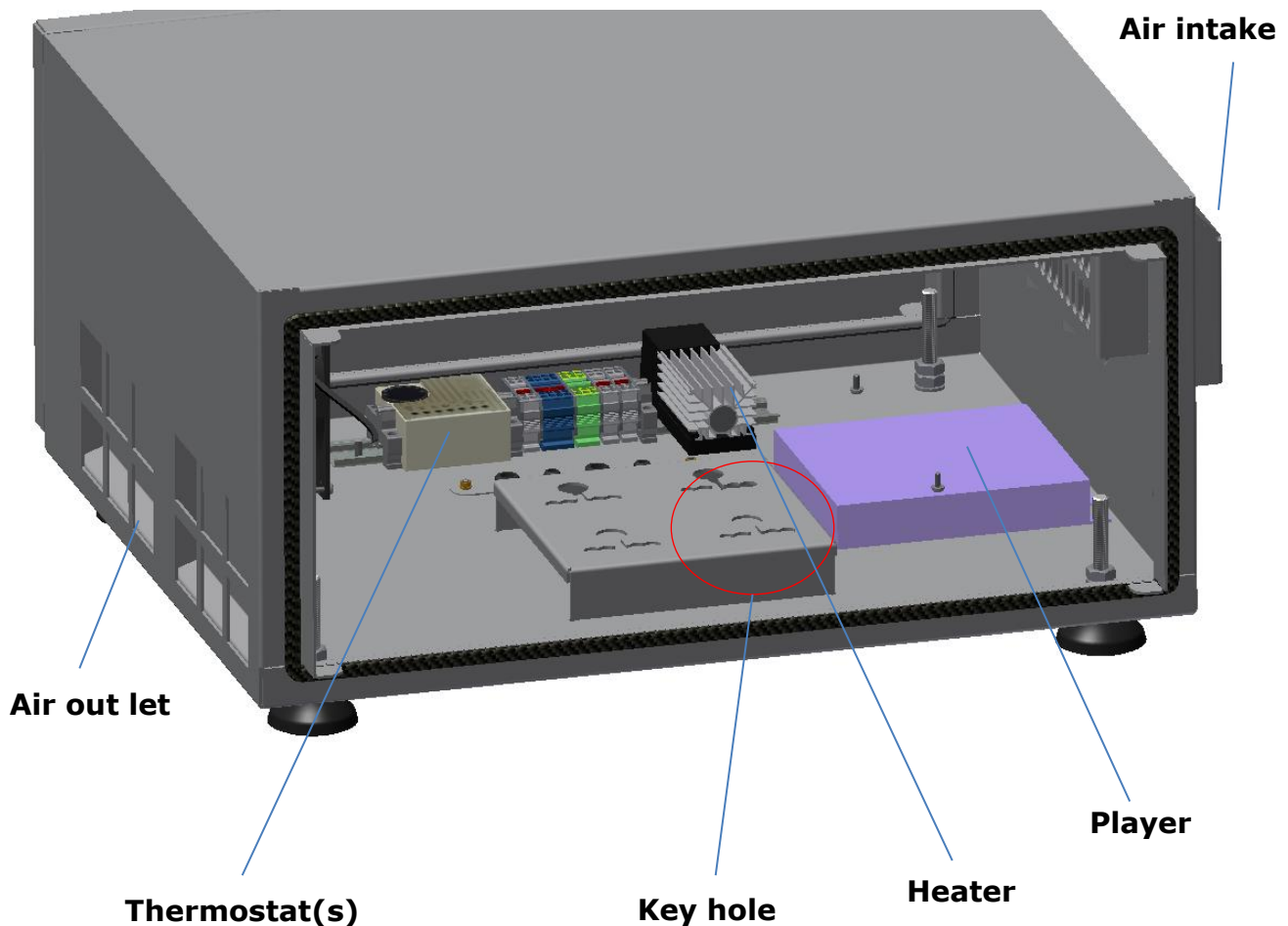
### 3.

Prepare the projector for installation.

Mount the projector mount provided with the housing to the projector.

Use correct screws and do not over-tighten the screws.

If needed install at first network devices or media players in the housing.



Be sure that when the projector is installed it does not interfere with the build-in thermostat(s) and heating element(s).

Keep the projector cables clear from other components.

#### Default thermostat setting:

15 degrees celcius (can be adjusted to the situation)

When the ventilator does not run; the heater is activated and visa versa.

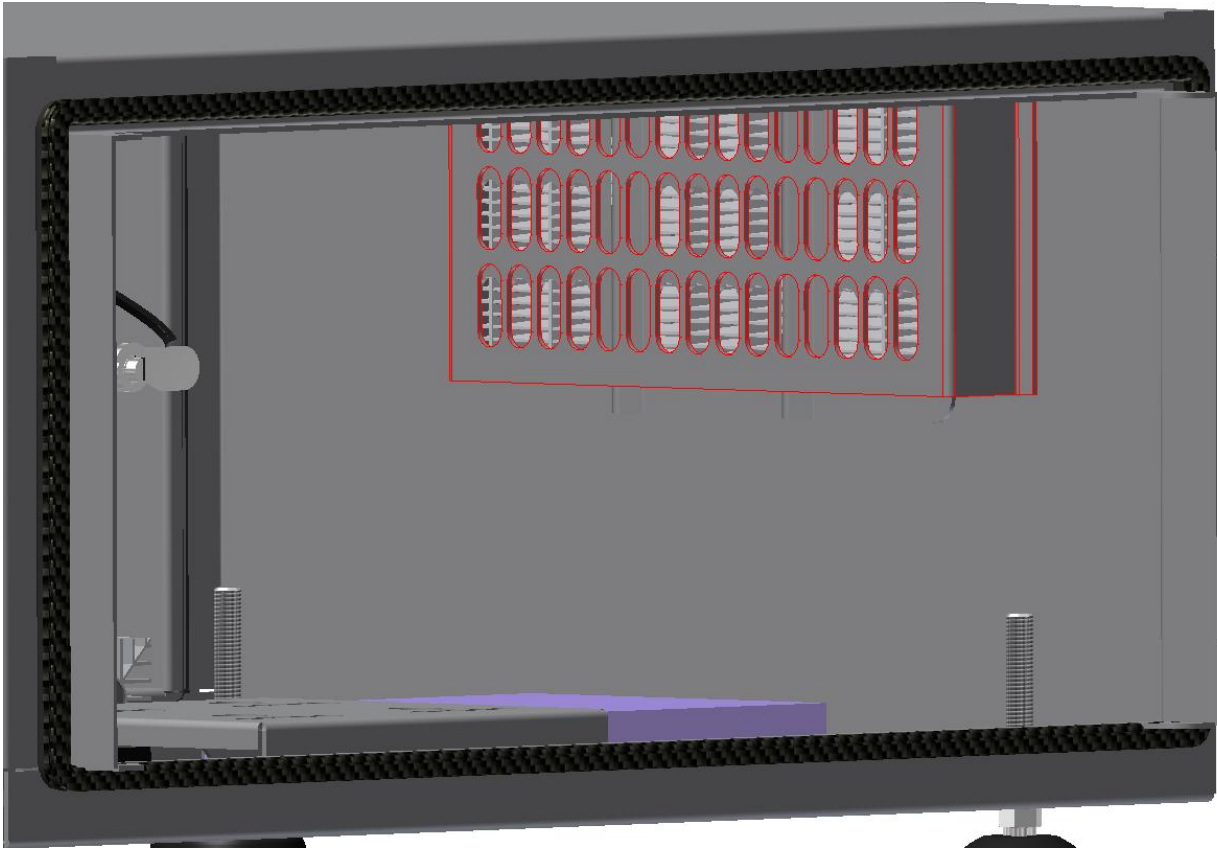
The ventilation keeps running to cool the projector from normal sun radiation.

#### 4.

For filter installation / replacement pull the red lined part of the filter cover.

Filter replacement can be performed when the filter is dirty.

An indication of dirty filters is an increasing internal temperature of the housing.



#### 5.

##### Check points

Check frequently the function of ventilators and pollution of the intake air filter.  
For re-ordering notify the Product number of the housing.

##### **Warnings:**

In case the housing is equipped with certified locks, store the serial numbers carefully for future re-ordering keys.

Mechanical modifications made to the housing may result in corrosion.

Prevent high pressure cleaning from the housing, do not spray water into the air intakes.

Audipack is not responsible for projector defects when ventilation or heating are not activated.

##### **Technical specifications:**

**Primary power supply 230 VAC 50-60 HZ**

**Power consumption ventilation (per ventilator) 20 W**

**Power consumption heating (per element) 50 W**

**Audipack's general conditions of sales and delivery apply to all of Audipack's deliveries. These conditions can be downloaded from Audipack's website, [www.audipack.com](http://www.audipack.com), or will be sent by post on request.**

**Audipack liefert ausschließlich unter die allgemeine Verkauf- und Lieferungsbedingungen von Audipack. Diese Bedingungen sind zum downloaden verfügbar auf die Webseite von Audipack, [www.audipack.com](http://www.audipack.com), oder werden Ihnen auf Anfrage per Post gesendet.**

**Alle leveringen geschieden uitsluitend volgens de Algemene Verkoop- en Leveringsvoorwaarden van Audipack. Een afschrift hiervan kunt u downloaden van de website van Audipack, [www.audipack.com](http://www.audipack.com), of wordt u op aanvraag gestuurd per post.**

**Les conditions de vente et de livraison de Audipack s'appliquent à tous les livraisons de Audipack. Cette conditions sont disponible sur le site internet de Audipack, [www.audipack.com](http://www.audipack.com), où seront envoyé par poste sur demande.**

**AUDIPACK  
Industriestraat 2  
2751 GT Moerkapelle  
the Netherlands**

**Tel: +31(0)795931671**

**Fax: +31(0)795933115**

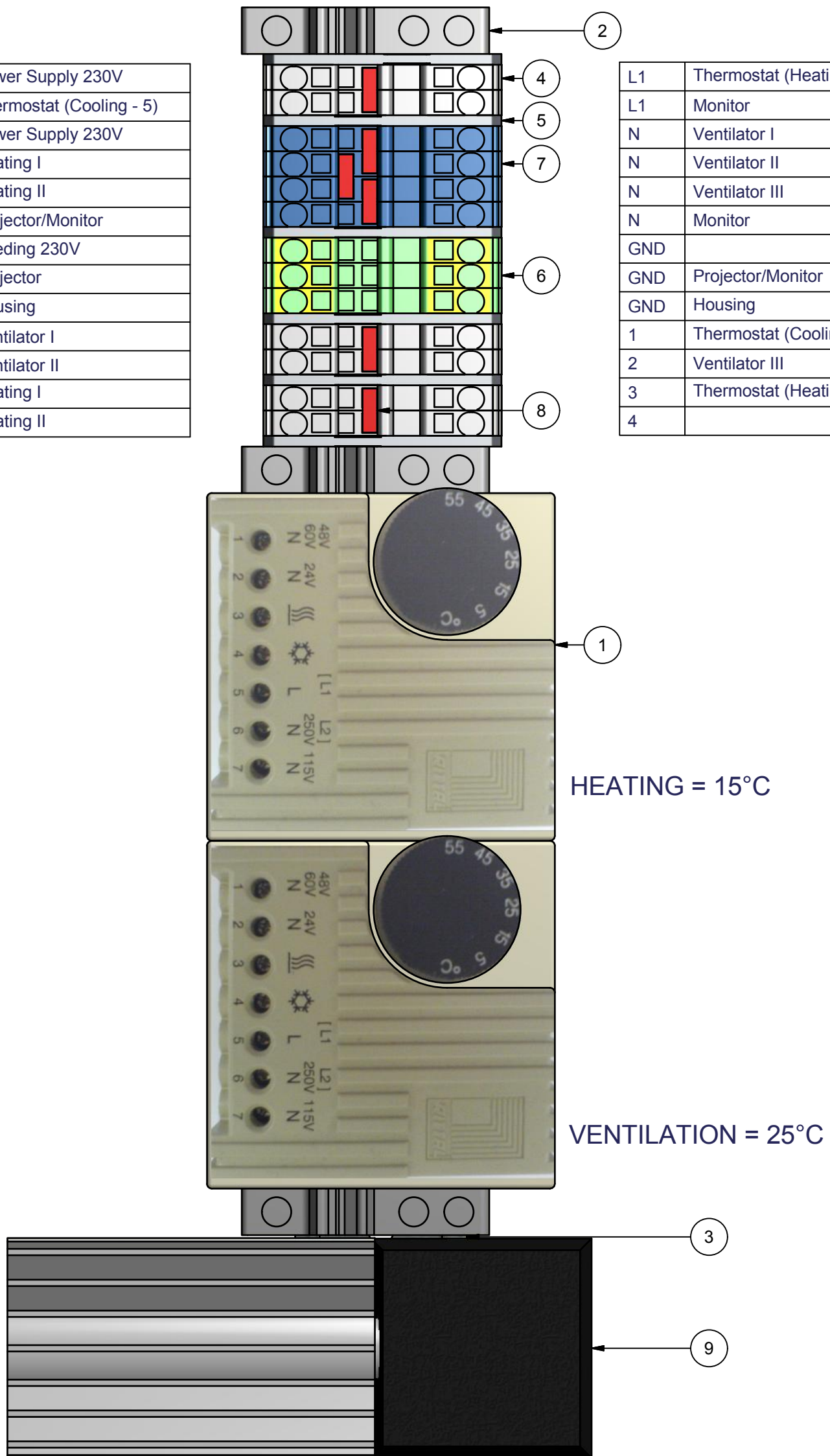
**Email: [audipack@audipack.com](mailto:audipack@audipack.com)**

**[www.audipack.com](http://www.audipack.com)**

Audipack reserves the right to make changes in specifications and other information contained in this document without prior written notice. The information provided herein is subject to change without notice. In no event shall Audipack be liable for any incidental, special, indirect, or consequential damages whatsoever, including but not limited to lost profits, arising out of or related to this manual or the information contained herein, even if Audipack has been advised of, known, or should have known, the possibility of such damages.

L1	Power Supply 230V
L1	Thermostat (Cooling - 5)
N	Power Supply 230V
N	Heating I
N	Heating II
N	Projector/Monitor
GND	Voeding 230V
GND	Projector
GND	Housing
1	Ventilator I
2	Ventilator II
3	Heating I
4	Heating II

L1	Thermostat (Heating - 5)
L1	Monitor
N	Ventilator I
N	Ventilator II
N	Ventilator III
N	Monitor
GND	
GND	Projector/Monitor
GND	Housing
1	Thermostat (Cooling - 4)
2	Ventilator III
3	Thermostat (Heating - 3)
4	



NOTE: All dimensions are ±..., in mm and subject to change

© COPYRIGHT AUDIPACK  
 This print and the information shown thereon, is the property of AUDIPACK.  
 It may not be delivered to others nor reproduced for general circulation without the written consent of the AUDIPACK engineering department.



**AUDIPACK**  
 Industriestraat 2-4  
 2751 GT Moerkapelle  
 the Netherlands  
 Tel: +31(0)795931671  
 Fax: +31(0)795933115  
 www.audipack.com

CONNECTIONS  
 431007

TEMPERATURE CONTROL

Dimensions are indications, not to be used for any preparations. No rights can be derived from the above dimensions.